

Cleaning instructions

Caution! For a correct cleaning process, please follow the instructions below. Before getting started, make sure that the machine is unplugged from mains power.



1 Take off the feeder **basket**.



2 Take off the **feeder plate** by unscrewing the central knob.



3 Insert the cleaning brush into the **Drain&Clean** hole in the base of the feeder, removing any residue that you may find in the tube.



4 Turn the knobs and take off the **front cover** as well as the side outputs.



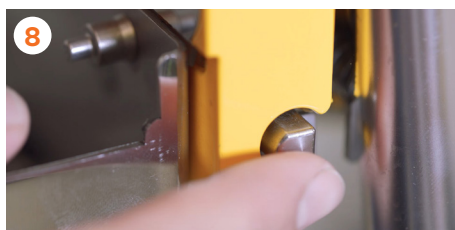
5 Take off the **automatic PulpOut System**, by lifting the assembly with the part closest to you.



6 Remove the **2Services tap** by easily unscrewing it.



7 Remove the stainless-steel **peel guides**.



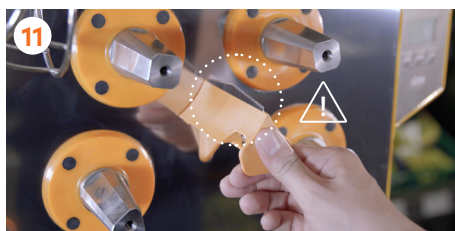
8 Press the side tabs to remove the **bin**.



9 Unscrew the central knob of the **Pressing Unit**.



10 Remove the **Pressing Kit** by pulling it towards you with the stainless-steel handles.



11 Remove the **blade** by pressing on the centre and pulling the handle towards you.
Caution! Be careful not to cut yourself.



12 Clean the **front** part of the machine with a soft sponge.



13 Remove the waste trolleys from the base to empty them.



14 Clean inside the **base** with a soft sponge.



15 Once all the parts have been disassembled, proceed to deep clean the machine.

The cleaning process will be explained in details for each one of the feeder machine's components below.

Cleaning instructions for components

! Cleanliness and hygiene warnings

It is necessary to clean all parts that come into contact with the juice each day.



All the parts, with the exception of the cover and the tap, can be put in a **dishwasher** to clean them.



It is necessary to sterilise the machine with a **disinfectant product** after each cleaning.



Cleaning of the extraction area and any of its removable parts must be done with a **sponge soaked in soapy water** suitable for food use. Do not use scouring sponges that could scratch the surfaces.



Rinse with plenty of water after sterilising, in order to remove any remaining disinfectant.

Daily cleaning

Blade, sub-filter, bin, peel guides, feed plate, front cover, and tap



1 Clean the **blade, sub-filter, bin, and peel guides** piece by piece with soapy water and then rinse with clean water.



2 Remove the **side outputs** from the front cover.



3 Clean the side outputs and the **central part** of the cover with a soft sponge to avoid damaging the material. Rinse with plenty of water.



4 Clean the **feeding plate** with a soft sponge to remove the remaining particles still stuck to it.



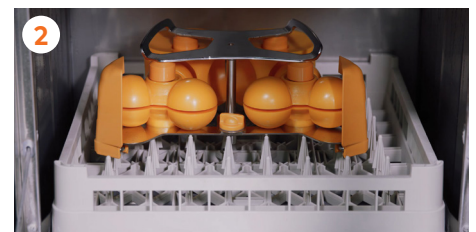
5 Clean the whole **tap** by letting soapy water run through the spout. Brush well at both holes.

Pressing assembly

To **clean quickly**, clean the Pressing Kit assembly in a single piece under a tap or in a dishwasher.



1 Clean the entire assembly with a sponge and soap in a single piece under a tap. Move the **juicing heads** around to make sure that they are completely clean.

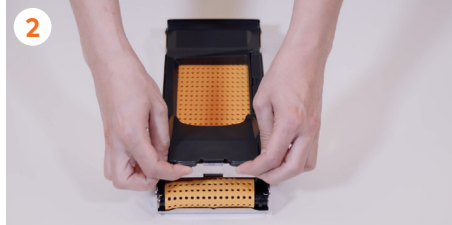


2 The assembly can also be washed in a single piece in a **dishwasher**.

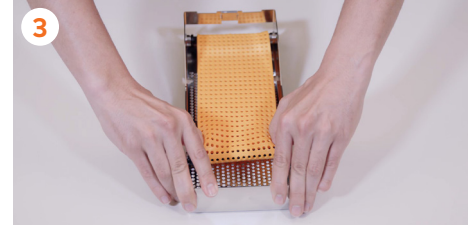
Cleaning instructions for components Automatic PulpOut System



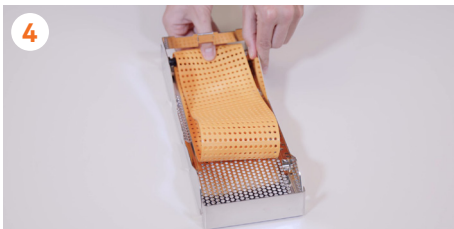
1 Rest the PulpOut system on a flat surface and disassemble the **side cover**, holding it from above to remove the ends of the guides.



2 Remove the black **upper lid** by pushing upwards on the tabs sticking out.



3 Turn the assembly around and place your fingers on the **sweeping belt** by pushing it outwards to release it.



4 Remove the **sweeping belt** together with the other roller and remove both parts.



5 All the parts can be cleaned by hand with a soft sponge and soapy **water**.



6 All the parts can also be washed in a **dish-washer**.

Recommended cleaning instructions

Midday cleaning

Cover, Pressing Kit, and PulpOut System



1 Turn the knobs and take off the front cover as well as the side outputs.



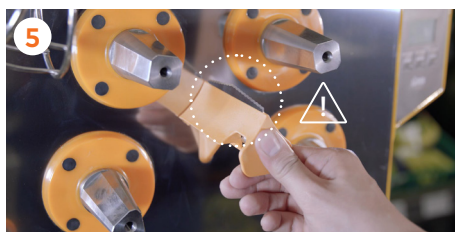
2 Remove the automatic PulpOut System by lifting the assembly with the part closest to you.



3 Unscrew the central knob of the Pressing Kit.



4 Remove the Pressing Kit by pulling it towards you with the stainless-steel handles.



5 Remove the blade by pressing on the centre and pulling the handle towards you.
Caution! Be careful not to cut yourself.



6 Remove the sub-filter and throw away its contents.



7 Clean the front area of the machine with a soft sponge and rinse with a damp paper towel or water.

To clean the parts that have been removed, follow the general instructions for daily cleaning.

Replacing parts.

For quick cleaning in the middle of the day, we recommend having a kit with spare parts. This Kit is made up of: a cover, pressing kit, and PulpOut system.

Weekly cleaning

2Services Tap



1 Remove the upper part of the **tap** by twisting the matte thread.



2 Clean the tube and piston with the brush supplied with soapy water.

Recommended cleaning instructions

Weekly cleaning

Pressing assembly

For **deep cleaning**, disassemble the Pressing Kit and clean all the parts.



1 Remove the **peel ejectors** located on the sides at the bottom.



2 the **knob** located on the lower central part.



3 Lift the **stainless-steel handles**



4 Remove the **juicing heads**.



5 Clean **all the parts** with a sponge and soap, rinse after with clean water. All the parts can also be washed in a **dishwasher**.

Fortnightly cleaning

Drain&Clean



1 Insert the cleaning brush into the **Drain&Clean** hole in the base of the feeder and remove any residue that you may find in the drainage tube.