



MODEL 55 POWER MEAT SAW OPERATING AND SERVICE MANUAL STARTING WITH SERIAL No. 55026



☆ IMPORTANT NOTICE ☆

This Manual contains important safety instructions which must be strictly followed when using this equipment.

TABLE OF CONTENTS:

	PAGE
NOTICE TO OWNERS AND OPERATORS	1
SAFETY TIPS	2
INSTALLATION	3
WARNING LABELS	5
OPERATION	6
TO PROCESS PRODUCT	6
CLEANING	8
MAINTENANCE	9
GENERAL	9
LUBRICATION	10
CHANGING THE SAW BLADE	11
WARNING LABEL LOCATIONS ON MACHINES	11
PARTS DIAGRAMS	12
OPERATOR'S NOTES	17
WIRING DIAGRAM	23
OPTIONAL DOUBLE ROLLING TABLES PARTS LIST & DIAGRAMS	24
OPTIONAL FIXED FRONT TABLE PARTS LIST & DIAGRAMS	25
PARTS LIST / ORDERING	26
PARTS ASSEMBLIES LIST / ORDERING	27
WEARABLE SAW PARTS	28
OPERATOR'S SIGNATURE PAGE	29
LIMITED WARRANTY	30

NOTICE TO OWNERS AND OPERATORS

BIRO's products are designed to process food products safely and efficiently. Unless the operator is properly trained and supervised, however, there is the possibility of a serious injury. It is the responsibility of the owner to assure that this machine is used properly and safely, strictly following the instructions contained in this Manual and any requirements of local law.

No one should use or service this machine without proper training and supervision. All operators should be thoroughly familiar with the procedures contained in this Manual. Even so BIRO cannot anticipate every circumstance or environment in which its products will be used. You, the owner and operator, must remain alert to the hazards posed by the function of this equipment - particularly the SHARP MOVING BAND TYPE SAW BLADE. No one under eighteen (18) years of age should operate this equipment. If you are uncertain about a particular task, ask your supervisor.

This Manual contains a number of safe practices in the SAFETY TIP section. Additional warnings are placed throughout the Manual. Warnings related to your personal safety are indicated by:



OR



Warnings related to possible damage are indicated by:



BIRO also has provided a wall chart to be posted near the equipment. If any warning label, wall chart, or Manual becomes misplaced, damaged, or illegible, please contact your nearest Distributor or BIRO directly for a replacement.

Remember, however, this Manual or the warning labels do not replace the need to be alert and to use your common sense when using this equipment.

This Manual applies to all Model 55 Power Meat Saws.

- NOTE -

A copy of this manual is included with each MODEL 55 POWER MEAT SAW.

**The descriptions and illustrations contained in this manual are not binding.
The manufacturer reserves the right to introduce any modification without
replacing the manual.**

SAFETY TIPS



SHARP MOVING BAND TYPE SAW BLADE TO AVOID SERIOUS PERSONAL INJURY

NEVER Touch This Machine Without Training and Authorization By Your Supervisor.

ALWAYS Read Operating and Service Manual **BEFORE** Operating, Servicing or Cleaning.

ALWAYS Keep Hands Clear of Sharp Band Type Saw Blade and Other Moving Parts.

ONLY Use a Qualified Electrician to Install According to Local Building Codes: Machines **MUST** Be Properly Grounded.

ONLY Install on a Level, Non-Skid Surface in a Clean, Well-Lighted Area Away From Children and Visitors.

DO NOT Attempt to Operate This Machine Until it has Been Inspected and Demonstrated by the Seller - Recognized **BIRO** Representative.

DO NOT Alter or Modify This Machine in any Way From its Original Form. This Machine in its Original Form Meets the Intent of O.S.H.A. Applicable Standards.

NEVER Operate with Saw Guide Bar with Saw Guard in the Raised Position or the Saw Guard Removed from the Saw Guide Bar.

ALWAYS Adjust the Saw Guide Bar with Saw Guard to Within 1/2" of Product to be Cut.

ALWAYS Use Supplied Safety End Cut Pusher Plate for Smaller Products or The Last Cuts of Products.

DO NOT Use This Machine for Non-Food Products.

DO NOT Use This Machine to Cut Pigs Feet.

DO NOT Wear Gloves While Operating.

ALWAYS Turn Off, Unplug From Power Source and Perform Lockout/Tagout Procedure to This Machine **BEFORE** Removing Shrouds, Removable Guards, Covers, Doors, Fences or Panels for Cleaning, Servicing or Any Other Reason.

NEVER Leave Machine Unattended While the Saw is Running.

PROMPTLY REPLACE Any Worn or Illegible Warning Labels.

USE ONLY Genuine **BIRO** Parts and Accessories Properly Installed.

INSTALLATION



TO AVOID SERIOUS PERSONAL INJURY PROPERLY INSTALL EQUIPMENT IN ADEQUATE WORK AREA

***ALWAYS** Read Operating and Service Manual **BEFORE** Operating, Servicing or Cleaning.*

***ALWAYS** Use Qualified Technician and Electrician for Installation.*

***ONLY** Install on a Level, Non-Skid Surface in a Clean, Well-Lighted Area Away From Children and Visitors.*

***DO NOT** Attempt to Operate This Machine Until it has Been Inspected and Demonstrated by the Seller - Recognized **BIRO** Representative.*

***DO NOT** Alter or Modify This Machine in Any Way from its Original Form. This Machine in its Original Form Meets the Intent of O.S.H.A Applicable Standards.*

***NEVER** Operate with Saw Guide Bar with Saw Guard in the Raised Position or the Saw Guard Removed from the Saw Guide Bar.*

***ALWAYS** Turn Off, Unplug From Power Source and Perform Lockout/Tagout Procedure to This Machine **BEFORE** Removing Shrouds, Removable Guards, Covers, Doors, Fences or Panels for Cleaning, Servicing or Any Other Reason.*

***NEVER** Operate Without all Warning Labels Attached and Wall Chart Posted.*

***NEVER** Leave Machine Unattended While the Saw is Running.*

***USE ONLY** Genuine **BIRO** Parts and Accessories Properly Installed.*

1. Read this Manual thoroughly before installation and operation. **Do not** proceed with installation and operation if you have any questions or do not understand anything in this Manual. Contact your local Distributor, or **BIRO first**.
2. Install machine on a level, solid, non-skid surface in a well-lighted work area away from children and visitors.



ALWAYS LEVEL MACHINE BEFORE USING

3. After installing machine in operational area, it is imperative that the four adjustable legs be adjusted to level the machine to eliminate rocking. Remove all wood supports.

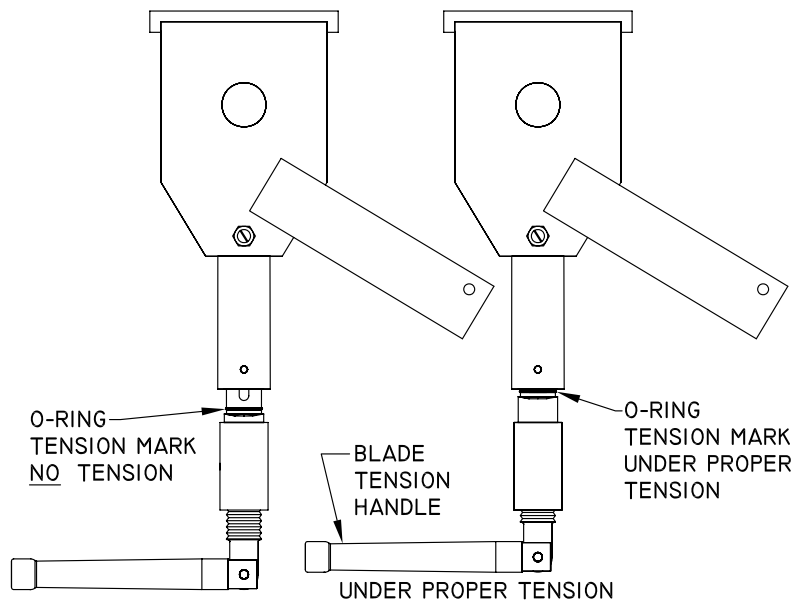


NOTE TO OWNER AND ELECTRICIAN: IF THIS MACHINE IS NOT CORD AND PLUG CONNECTED TO THE ELECTRICAL SUPPLY SOURCE, THEN IT SHOULD BE EQUIPPED WITH, OR CONNECTED TO, A LOCKABLE, MANUALLY OPERATED DISCONNECT SWITCH (1010.147 OSHA).

4. Machine **MUST** be properly grounded. Use qualified electrician to install according to building codes.

WIRING MOTOR

- (A) All saws are wired at the factory for 220 volts or 440 volts as specified on original order. Be sure motor specifications (voltage, cycle, phase) match power supply line. Be sure line voltage is up to specification.
- (B) Connect leads to machine in a manner that will be approved by local electrical inspectors.
- (C) We recommend not less than No. 12 wire. If the leads are too light, machine may not have sufficient cutting power and/or speed.
- (D) The V-belt is packed loose in machine to prevent deformation, and must be installed on pulleys at time of installation.
- (E) Motors are dual voltage and can be changed according to wiring diagram on motor nameplate. Be sure the correct AEG contactor and overload is installed to match the selected volts and amps.
- (F) FAILURE TO USE THE PROPER CONTACTOR AND OVERLOAD FOR MOTOR VOLTAGE WILL CAUSE IRREPARABLE DAMAGE TO THE CONTACTOR.
- (G) The BIRO Manufacturing Company is not responsible for permanent wiring, connection or installation.



- 5. Be sure saw blade is properly installed on the saw wheels and set at proper tension. Turn the blade tensioning handle clockwise until the tension mark is even with the bottom of the upper wheel hinge plate as shown.
- 6. Make sure the saw guide bar is in its lowest position. Close head and base doors and latch.



KEEP HANDS CLEAR OF SHARP MOVING BAND TYPE SAW BLADE

- 7. Push the start button and check for proper phasing of the motor. Blade should be traveling down through the saw guide.
- 8. Watch for proper tracking of the saw blade. Back of blade should be centered in the hole in saw guide in stationary bar (Item No. S119A). Push the stop button to stop machine.
- 9. Check placement of all warning labels, wall chart and Manual. Machine is ready for trained operators to process product.
- 10. Contact your local Distributor or **BIRO** directly if you have any questions or problems with installation or operation of this machine.

**WARNING LABELS
FOR BIRO POWER MEAT SAWS
SEE PAGE 11 FOR LOCATIONS ON MACHINE**

WARNING



DO NOT Use Unless Trained and Authorized By Supervisor And Over 18 Years Old. READ Operation Manual Thoroughly Before Operating. ALWAYS Keep Hands Clear of Saw Blade and other Moving Parts. Turn Off Saw when Finished Cutting. ALWAYS Keep Blade Guard Adjusted to 1/2" Above the Product being Cut. ALWAYS Use End Cut Pusher Plate When Cutting Smaller Piece of Product. DO NOT Use Saw if it is Altered, Damaged, Improperly Maintained, or If Warnings Are Illegible or Missing. ALWAYS Disconnect and Unplug from Main Power Source and Perform LOCKOUT/TAGOUT Before Cleaning or Servicing. Failure to comply with warning could result in serious bodily injury.

#653PC-E

ITEM No. 653PC-E

MUCHO CUIDADO



NO Opere Esta Sierra Sin Haber Sido Entrenado Para Ello Ni Tampoco Sin Autorizacion de un Supervisor. Uno Tiene que Haber Cumplido 18 Anos Para Operarla. LEA Cuidadosamente el Manual de Operacion Antes de Usar Este Equipo. SIEMPRE Guarde las Manos a Salvo de la Hoja de Serrar y de Otras Partes Moviles. Cierre el Interruptor Despues de Terminar de Cortar. SIEMPRE Tenga Ajustado el Guardasierra Para que Quede a 1/2" Por Encima del Producto que se Corta. SIEMPRE Haga Uso de la Placa de Empuje Para Cortes de Extremos al Cortar Trocitos Pequenos. NO Utilice la Sierra si se Halla Alterada, Danada o si No ha Sido Debidamente Mantenido o si la Advertencia es Illegible o si Falta Esta. SIEMPRE Desconecte el Equipo Decenchufandolo de la Fuente de Fuerza. Dejelo Bajo Llave o con Etiqueta que Prohiba su Uso Antes de Limpiarlo o Hacer Trabajos de Mantenimiento.

#653PC-SP

ITEM No. 653PC-SP



NOT TO SCALE



ALWAYS LOWER GUARD TO HEIGHT OF PRODUCT



DANGER EXPLOSION BLADE



ITEM No. 708

OPERATION



SHARP MOVING BAND TYPE SAW BLADE TO AVOID SERIOUS PERSONAL INJURY

***NEVER** Touch This Machine Without Training and Authorization By Your Supervisor.*

***ALWAYS** Read Operating and Service Manual **BEFORE** Operating, Servicing or Cleaning.*

***ALWAYS** Keep Hands Clear of Band Type Saw Blade and Other Moving Parts.*

***DO NOT** Tamper With, Bypass, Alter, or Modify this Equipment in Any Way or Form.*

***DO NOT** Alter or Modify This Machine in any Way From its Original Form. This Machine in its Original Form Meets the Intent of O.S.H.A. Applicable Standards.*

***NEVER** Operate with Saw Guide Bar with Saw Guard in the Raised Position or the Saw Guard Removed from the Saw Guide Bar.*

***ALWAYS** Adjust the Saw Guide Bar with Saw Guard to Within ½” of Product to be Cut.*

***ALWAYS** Use Safety End Cut Pusher Plate for Smaller Products or The Last Cuts of Product.*

***DO NOT** Use This Machine for Non-Food Products.*

***DO NOT** Use This Machine to Cut Pigs Feet.*

***DO NOT** Wear Gloves While Operating.*

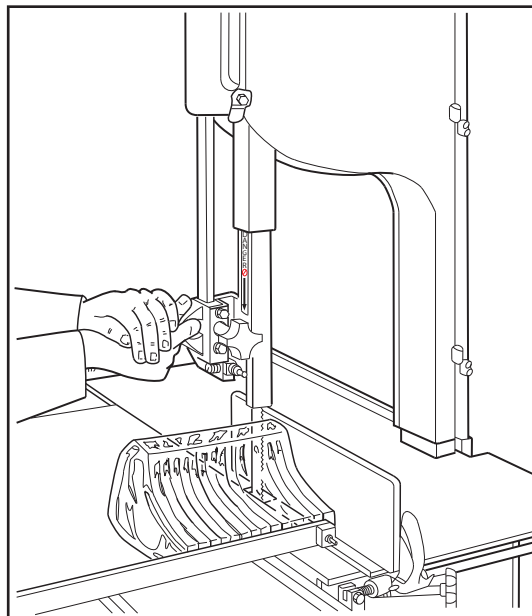
***ALWAYS** Turn Off, Unplug from Power Source and Perform Lockout/Tagout Procedures to This Machine **BEFORE** Removing Shrouds, Removable Guards, Covers, Doors, Fences or Panels for Cleaning, Servicing or Any Other Reason.*

***NEVER** Leave Machine Unattended While the Saw is Running.*

***NEVER** Operate Without All Warnings Attached and Wall Chart Posted.*

A. TO PROCESS PRODUCT

1. Before starting power saw, adjust saw guide bar with saw guard “B” to within ½” of product to be cut.
“B” found on next page.





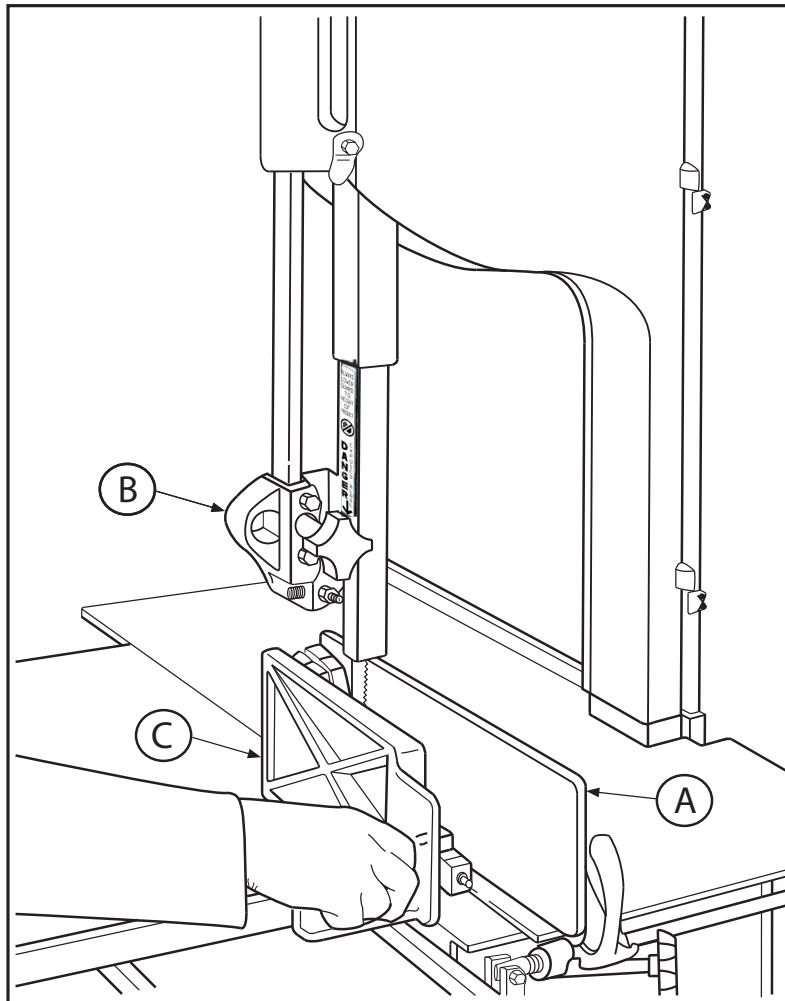
DO NOT WEAR GLOVES WHILE OPERATING

2. Make sure all doors are closed and latched.
3. Adjust meat gauge plate “A” forward to desired thickness of cut.
4. Push start button and watch blade for proper tracking.
5. Standing in front of the power saw, place product on the meat carriage. Pay attention to position of your hands. Keep hands clear of moving band type saw blade. Leaning lightly against the scalloped front edge of meat carriage, hold the product firmly in right hand with product face flush against the meat gauge plate. Move the meat carriage from right to left at a steady rate until fully past the saw blade. Use left hand to remove and stack cut product, **NEVER REACH IN FRONT OF BAND TYPE SAW BLADE.** On the return stroke, pull the product slightly toward you to clear the blade.



NEVER REACH OR GRAB FOR PRODUCT IN FRONT OF MOVING BAND TYPE SAW BLADE

6. ALWAYS use the Safety End Cut Pusher Plate “C” (Part No. 256P) for smaller products or the last cuts of product. The pusher plate is supplied as standard equipment on all BIRO power saws.



7. When finished cutting, push stop button. Perform lockout/tagout procedure.

CLEANING



SHARP MOVING BAND TYPE SAW BLADE TO AVOID SERIOUS PERSONAL INJURY

ALWAYS Turn Off, Unplug from Power Source and Perform Lockout/Tagout Procedures to This Machine **BEFORE** Removing Shrouds, Removable Guards, Covers, Doors, Fences or Panels for Cleaning, Servicing or Any Other Reason.

ALWAYS Read Operating and Service Manual **BEFORE** Operating, Servicing or Cleaning.

DO NOT Alter or Modify This Machine in any Way From its Original Form. This Machine in its Original Form Meets the Intent of O.S.H.A. Applicable Standards.

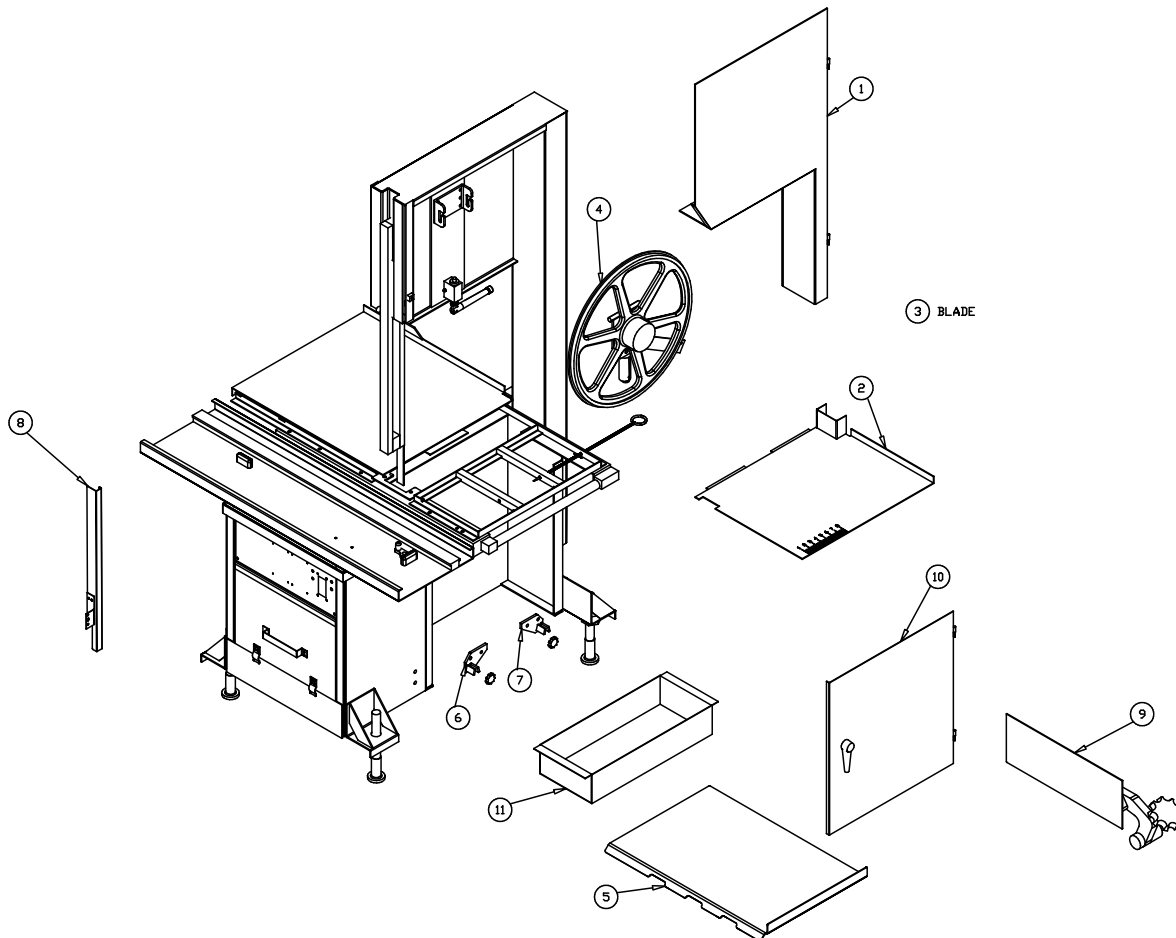
ONLY Use Recommended Cleaning Equipment, Materials and Procedures.

NEVER Spray Water or Other Liquid Substances Directly at Motor, Power Switch or any Other Electrical Components.

ALWAYS Thoroughly Clean Equipment at Least Daily.

CLEANING THE BIRO POWER MEAT SAW:

Disconnect electrical power to the machine before cleaning. Parts to be removed have been made accessible and can be removed without tools. Notice the drawing below that all parts are numbered. Each part should be removed for cleaning in the numbered sequence shown. To ensure cleaner cuts, keep the cleaning system in good condition. Parts on the cleaning system which should be checked weekly, and changed as required are as follows: Wheel Cleaners (Part No. 179), Saw Cleaners (Part No. 131), Saw Guide in Stationary Bar (Part No. S119A), Upper Saw Guide (Part No. S602B), Lower Blade Back-Up Guide (Part No. S608), and Nylon Filler (Part No. 177).



MAINTENANCE



TO AVOID SERIOUS PERSONAL INJURY

ALWAYS Turn Off, Unplug from Power Source and Perform Lockout/Tagout Procedures to This Machine **BEFORE** Removing Shrouds, Removable Guards, Covers, Doors, Fences or Panels for Cleaning, Servicing or Any Other Reason.

ALWAYS Read Operating and Service Manual **BEFORE** Operating, Servicing or Cleaning.

NEVER Touch This Machine Without Training and Authorization By Your Supervisor.

NEVER Bypass, Alter or Modify This Machine in Any Way from its Original Form. This Machine in its Original Form Meets the Intent of O.S.H.A Applicable Standards.

ALWAYS Keep Hands Clear of Band Type Saw Blade and Other Moving Parts.

PROMPTLY REPLACE Any Worn or Illegible Warning Labels.

USE ONLY GENUINE BIRO Parts and Accessories Properly Installed.

A. GENERAL

1. Machine should be generally inspected every time it is cleaned (at least daily) to ensure that it is in good condition and has not been damaged or tampered with.
 - a. **SAW WHEELS:** Clean outer diameter grooves daily. Check for cracks, gouges or wear on the flange and grooves.



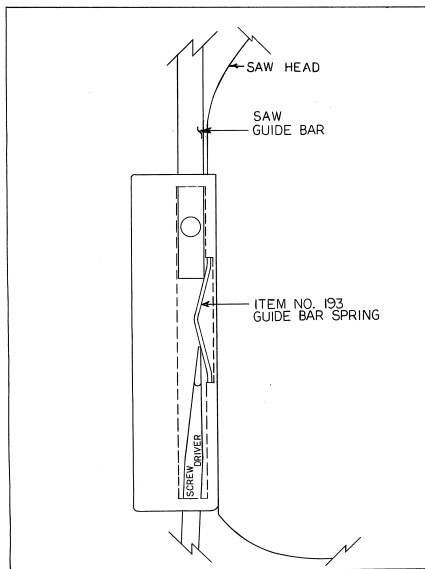
DO NOT IMMERSE UPPER WHEEL ASSEMBLY IN WATER

- b. **WHEEL CLEANER ASSEMBLIES:** Check condition of fiber cleaner, change every four (4) weeks.
- c. **REMOVABLE FINGER LIFT ASSEMBLY:** Check condition of saw guard, make sure mounting bolts are tight and the “DANGER EXPOSED BLADE” decal is affixed and legible. Check condition of upper saw guide, replace every six (6) months. Check adjustment of upper saw guide. Should be $\frac{1}{32}$ ” between back of blade and saw guide carbide.



NEVER USE THIS MACHINE WITHOUT PROPERLY INSTALLED AND FUNCTIONING SAW GUIDE BAR WITH SAW GUARD

- d. **SAW GUIDE BAR:** Check condition of inner and outer saw guide bar, replace as necessary. Check saw guide bar spring or brass pad used with saw guide bar lock knob for proper tensioning of bars. Either system should hold the bars in any desired position in its travel. Replace saw guide bar spring (Part No. 193) or brass pad (Part No. 194) and lock knob (Part No. 194KS-1) as necessary using instructions on following page.



1. Remove the finger lift fastener knob and the finger lift assembly.
2. Remove the finger lift fastener stud.
3. Push the saw guide bar up and out of the top of the head structure.
4. Remove the saw guide bar spring or brass pad.
5. Clean and lubricate the babbitt pocket area (the square indented area that seats the saw guide bar spring or brass pad).
6. Lower the new saw guide bar spring or brass pad through the top of the babbitt pocket area and guide the spring/pad into position with a standard screwdriver. (NOTE: drawing)
7. While holding the saw guide bar spring or brass pad in position, re-enter the saw guide bar from the top compressing the saw guide bar spring slightly until the saw guide bar slides past the spring.
8. Replace the finger lift fastener stud, the finger lift assembly and the finger lift fastener knob.
9. Test by making several adjustments.

- e. **STATIONARY BAR ASSEMBLY:** Check condition of nylon filler, change every four (4) weeks. Check condition of saw guide, check tracking of blade through guide, back of blade should be centered in hole, replace every six (6) months. Check condition and adjustment of blade and saw guide carbide. Replace every six (6) months.
- f. **SAW CLEANERS:** Check condition of blade cleaners, replace every four (4) weeks.
- g. **MEAT GAUGE ASSEMBLY:** Check free movement of meat gauge arm on gear rack. Gear rack to be kept lubricated at all times with light food grade oil. Check operation of release handle. Check that worm gear engages properly with gear rack.
- h. **MEAT CARRIAGE ASSEMBLY:** Check free movement through full range of travel. Check side to side tolerance, adjust as necessary. Check condition of and grease bearings, replace as necessary. Check condition of thumb guard, replace as necessary.
- i. **SAFETY ITEMS:** Check that safety end cut pusher plate is with machine and accessible. All warning labels are present and legible. Model and Serial Number plate is affixed and legible. Wall poster within operators view from machine. Operating and Service Manual accessible to operator.

B. LUBRICATION

1. **UPPER WHEEL BEARINGS:** Grease every four (4) months. Change grease every twelve (12) months.
2. **MEAT CARRIAGE BEARINGS:** Grease every four (4) weeks.
3. **SAW GUIDE BAR:** Oil daily with food machine oil.
4. **MEAT GAUGE GEAR RACK:** Oil daily with food machine oil.
5. **LOWER BEARING HOUSING:** Grease every four (4) months. Change grease every twelve (12) months.
6. **BLADE TENSION SPRING SCREW ASSEMBLY:** Grease every 4 weeks.
 Note: Remove upper wheel and turn #14782 Blade Tension screw clockwise until it bottoms out against #14781 Blade Tension Handle then fill the cavity under the O-Ring on the #14782 Blade Tension Screw with #374 Shell Cassida Grease EPS-2 and reassemble.
7. **MOTOR BEARINGS:** Bearing grease will lose its lubricating ability over time, not suddenly. The lubricating ability of a grease (over time) depends primarily on the type of grease, the size of the bearing, the speed at which the bearing operates and the severity of the operating conditions. Good results can be obtained if the following recommendations are used in your maintenance program.
 A high grade ball or roller bearing grease should be used. Recommended grease for standard service conditions is Polyrex EM (Exxon Mobil).
 Equivalent and compatible greases include: Texaco Polystar, Rykon Premium #2, Pennzoil Pen 2 Lube, and Chevron SRI.
 Recommended lubrications intervals is every 12 months with the equivalent of two (2) teaspoons of grease. If the motor does not have zerk fittings, the motor bearings are sealed for life.

C. CHANGING THE SAW BLADE

Disconnect electrical power to the machine. Move meat gauge plate to rear of machine on gear rack and turn away from head out of the way. Open the head door fully. Pull out platter hold down rod. Remove right side platter half. Release tension on blade, turn tensioning handle counter-clockwise. Lift nylon filler. Remove blade. Install new blade by reversing procedure. Be sure tension mark is even with the bottom of the hinge plate for proper blade tension.

WARNING LABEL LOCATIONS ON MODEL 55 POWER MEAT SAW



ITEM No. 653PC-E; Warning label,
English
1 ea. attached to channel bracket.

ITEM No. 653PC-SP; Warning label,
Spanish
1 ea. attached to channel bracket.

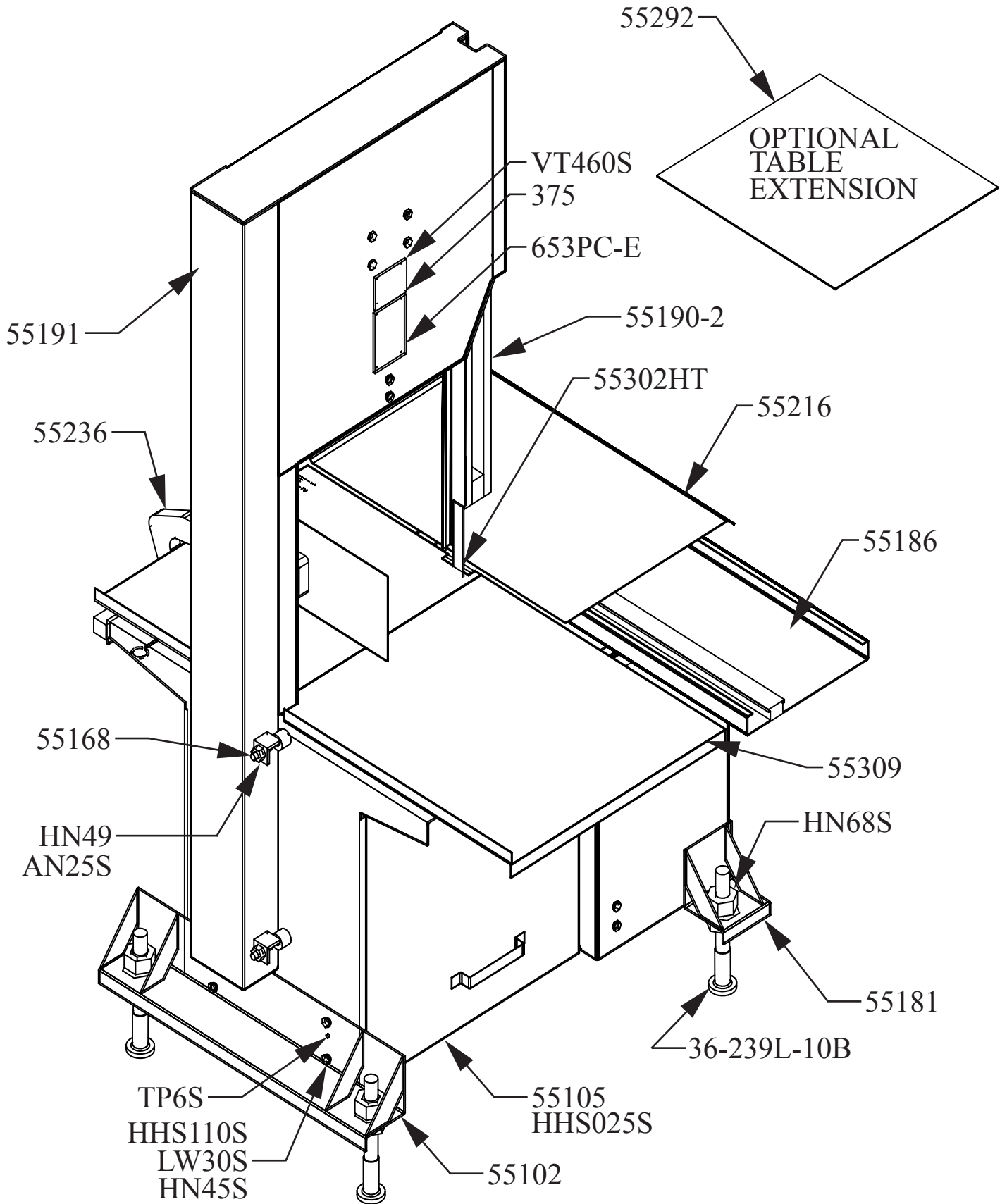


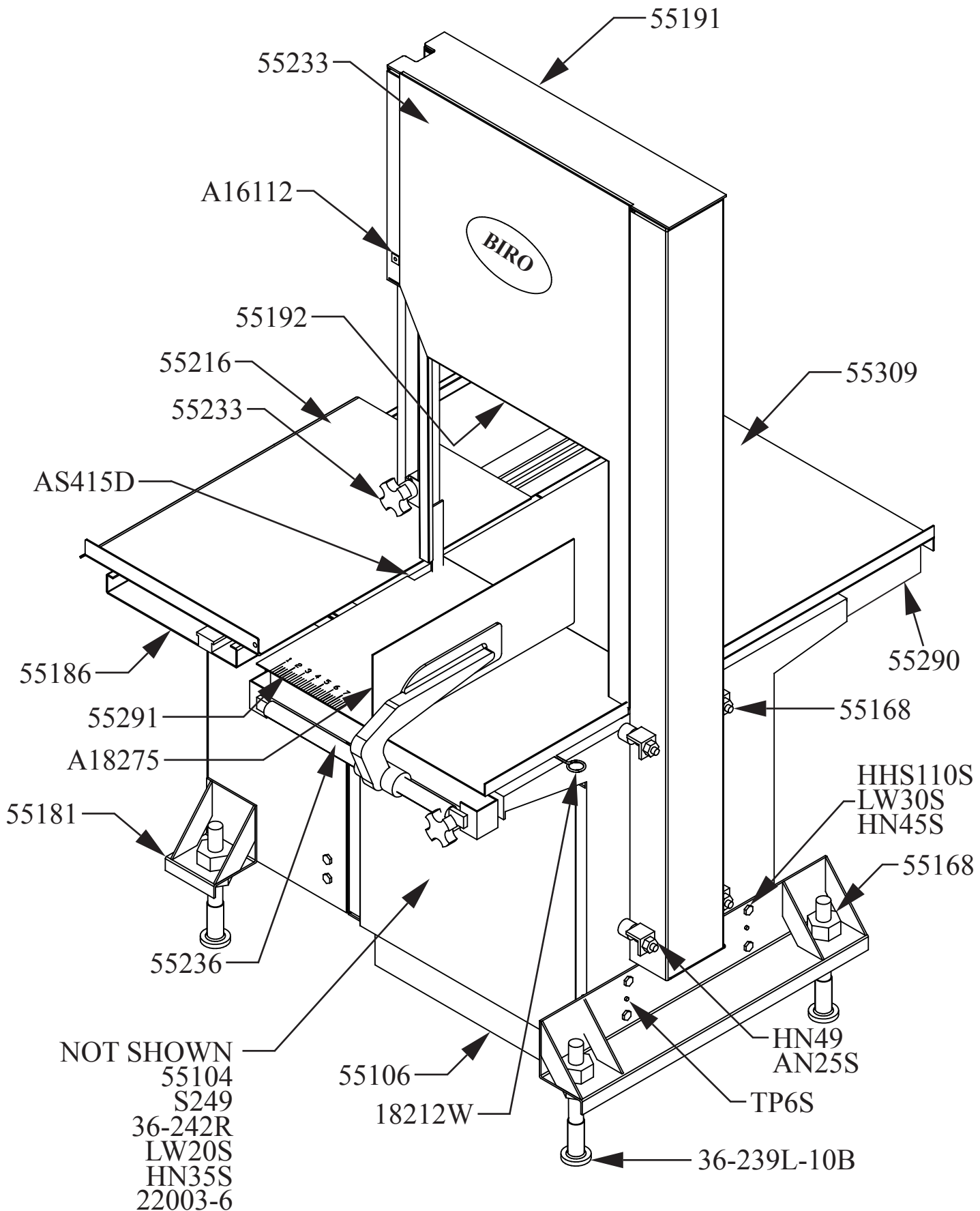
ITEM No. 653PC-E; Warning label,
English
1 ea. attached to head.



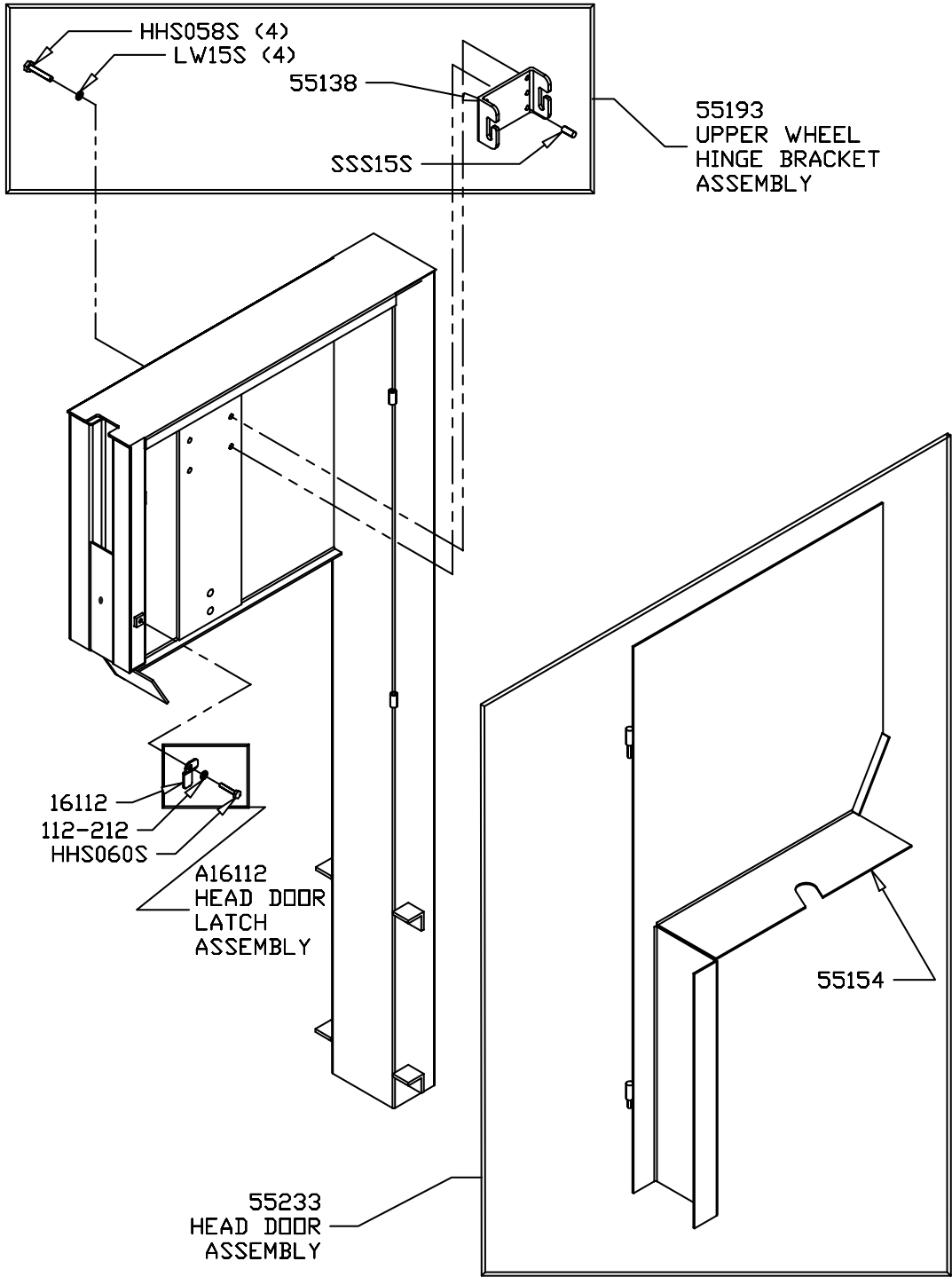
ITEM No. 708; Danger
Exposed Blade
Attached to saw guard on
saw guide bar







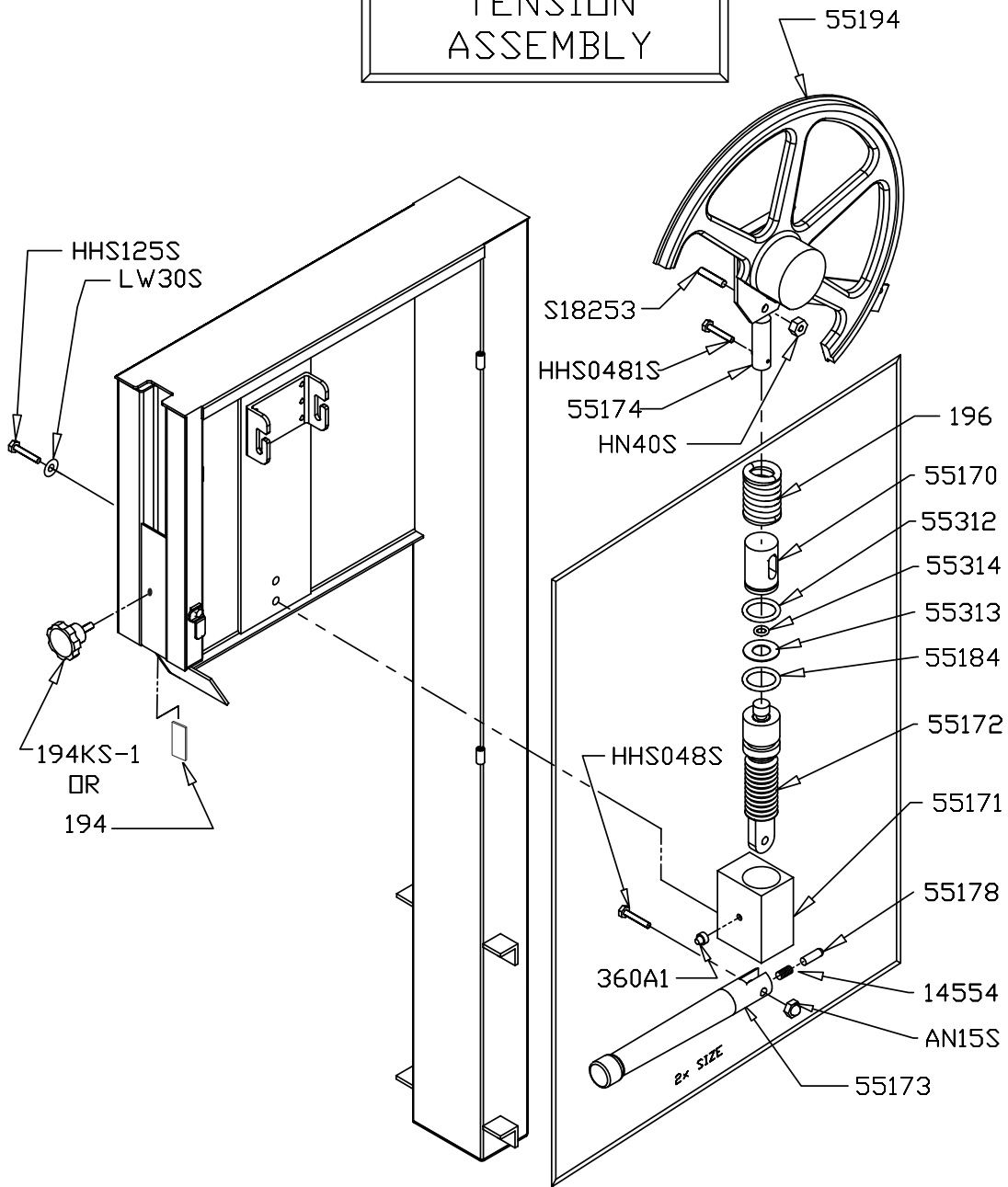
55191
S.S. HEAD & DOOR
ASSEMBLY



Item No.	Description
A16112	Head door latch assembly
HHS058S	Hex head screw, ⁵ / ₁₆ - 18 x ⁷ / ₈ , SS
HHS060S	Hex head screw, ⁵ / ₁₆ - 18 x 1, SS
LW15S	Lock washer, ⁵ / ₁₆ , SS
SSS15S	Set screw, ⁵ / ₁₆ - 18 x ⁵ / ₁₆ , SS cup point
112-212	Compression washer, ²¹ / ₆₄ ID x ³ / ₈ OD

Item No.	Description
16112	Head door latch, SS
55138	Hinge bracket, Upper wheel
55191	Head and door assembly
55193	Hinge bracket assembly, Upper wheel
55233	Head door assembly, SS

55192
BLADE
TENSION
ASSEMBLY



Item No.	Description
AN15S	Acorn nut, 1/4 - 20, SS
HHS048S	Hex head screw, 1/4 - 20 x 1 1/4, SS
HHS125S	Hex head screw, 1/2 - 13 x 1, SS
HHS0481S	Hex head screw, 1/4 - 20 x 1 1/2, SS
HN40S	Hex nut, 1/2 - 13 light jam, SS
LW30S	Lock washer, 1/2, SS
S18253	Upper wheel aligning screw, SS
194	Saw guide bar lock pad, brass
194KS-1	Saw guide bar lock knob assembly
196	Saw tension spring
360A1	Grease fitting
14554	Compression spring, SS

Item No.	Description
55170	Blade tension cap gauge
55171	Blade tension adjustment housing
55172	Blade tension screw
55173	Blade tension adjustment handle
55174	Upper wheel plate
55178	Plunger pin, blade tension handle
55184	O-ring, blade tension screw
55192	Blade tension assembly
55194	Upper wheel assembly with Hinge plate
55312	O-ring for tension cap gauge
55313	Plastic washer - tension screw
55314	O-ring, plastic washer

Blade Tension Screw Conversion Kit

ITEM No. 55172K

INSTALLATION INSTRUCTIONS

Disconnect the machine from main power supply.

Loosen tension on the saw blade and remove the upper wheel assembly.

Unbolt the (A) tensioning handle from the (B) blade tension screw.

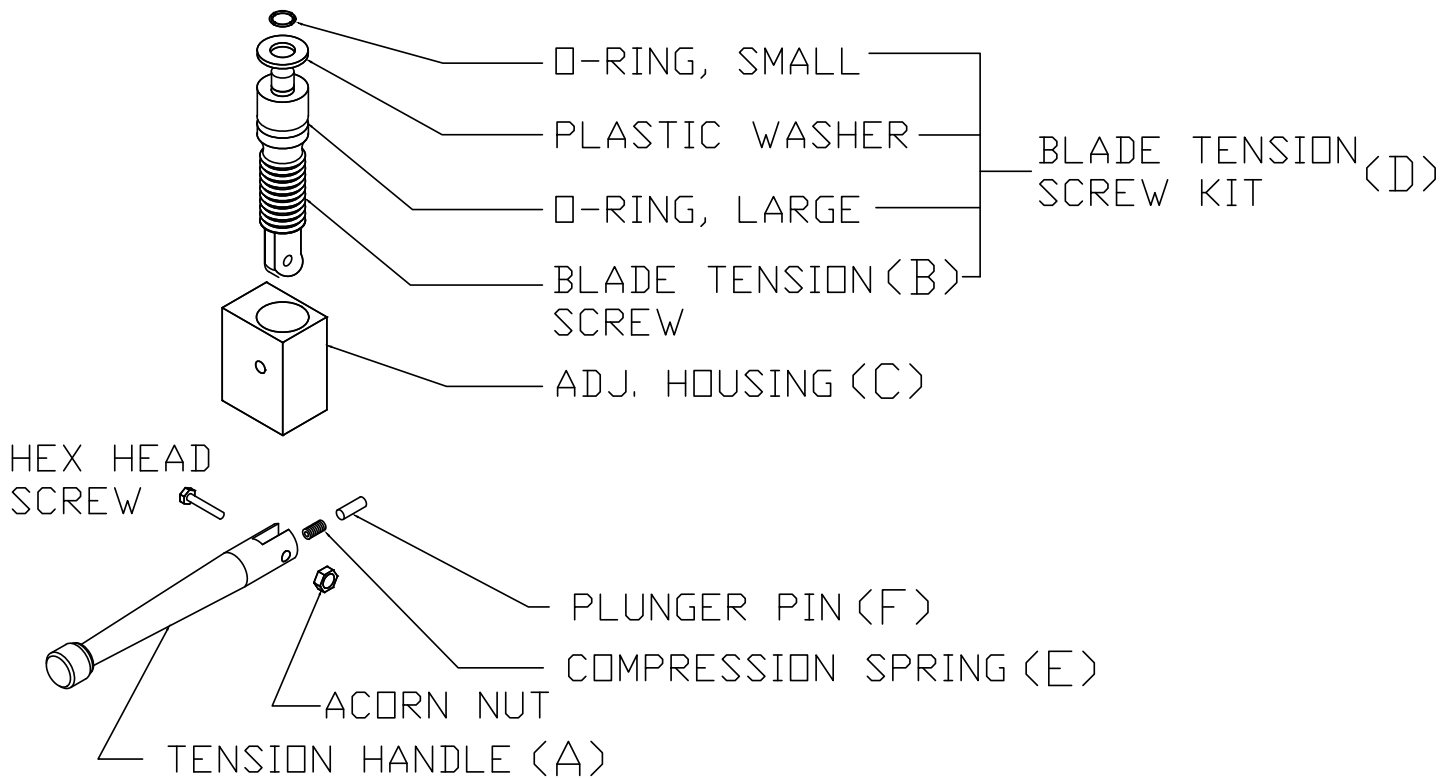
At the bottom handle mount turn the (B) blade tension screw clockwise until it can be lifted out of the (C) housing.

Apply a good food grade grease to the replacement (D) tension screw and install into the (C) housing turning counterclockwise until it bottoms out.

Replace the (A) tensioning handle. Be sure the (E) spring and (F) plunger pin are still present in the end of the (A) handle.

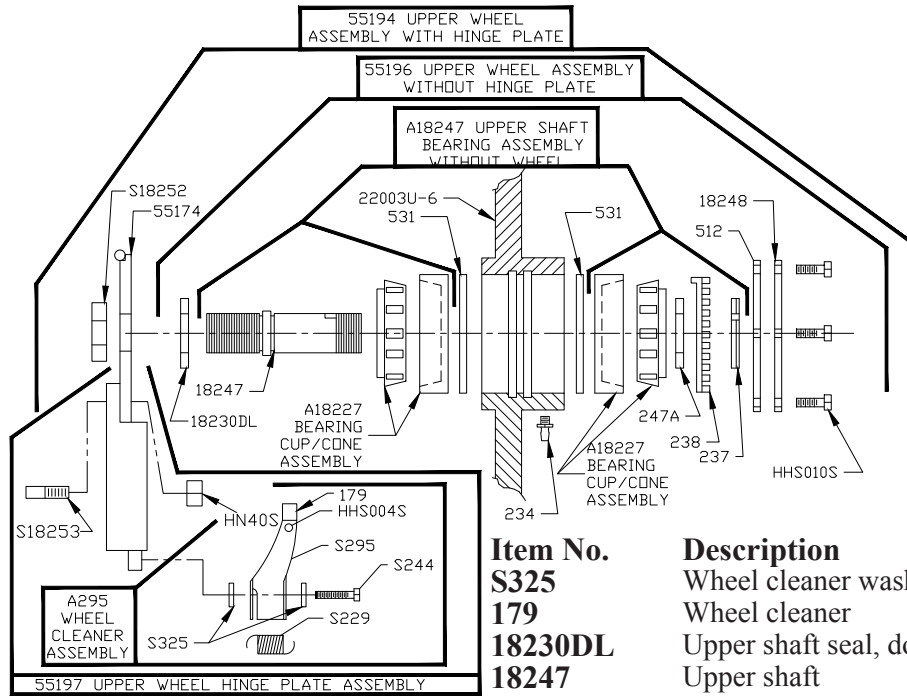
Replace the upper wheel assembly and the blade.

Tension the blade.

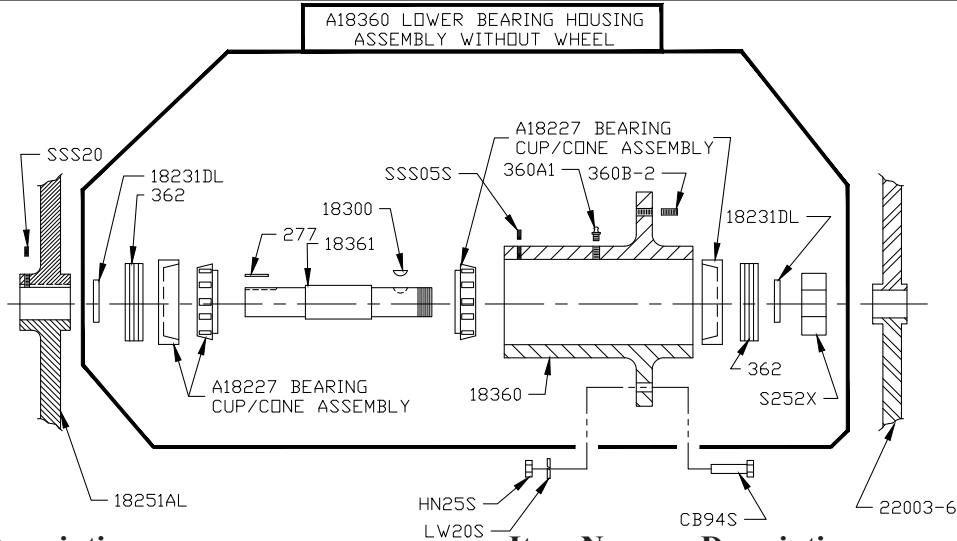


(A) 55173	Tension Handle	55184	O-Ring, Large
(B) 55172	Blade Tension Screw	55313	Plastic Washer
(C) 55171	Adjustment Housing	55314	O-Ring, Small
(D) 55172K	Blade Tension Screw Kit	AN15S	Acorn Nut, 1/4-20
(E) 14554	Compression Spring	HHS048S	Hex Head Screw, 1/4-20 x 1 1/4
(F) 55178	Plunger Pin		

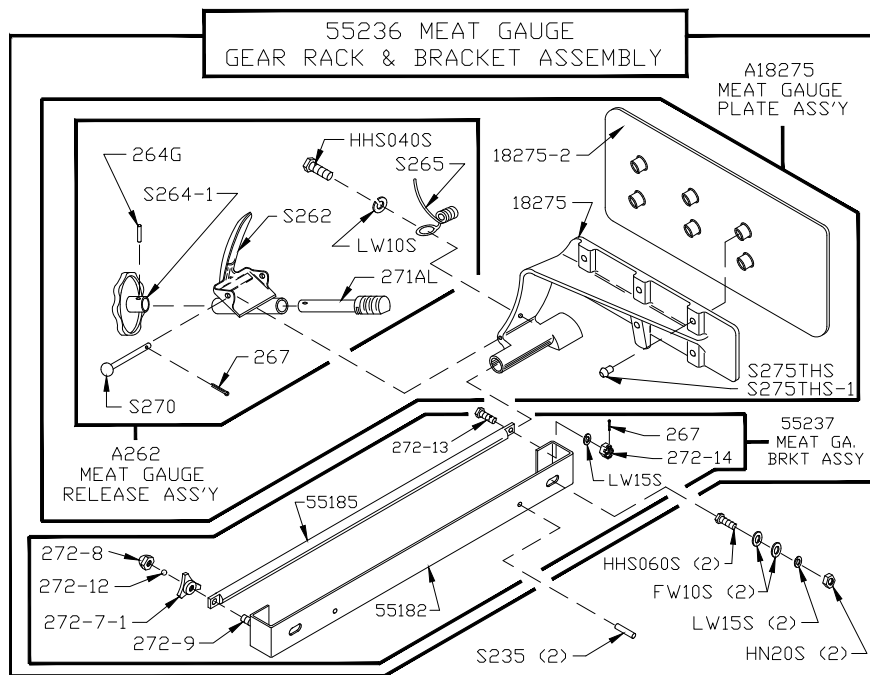
OPERATOR'S NOTES



Item No.	Description	Item No.	Description
A18227	Bearing cup/cone assembly	S325	Wheel cleaner washer, SS
A18247	Upper shaft & bearing assembly less wheel	179	Wheel cleaner
A295	Wheel cleaner assembly	18230DL	Upper shaft seal, double lip
HHS004S	Hex head screw, 8 - 32 x 3/8, SS	18247	Upper shaft
HHS010S	Hex head screw, 10 - 32 x 3/8, SS	18248	Upper wheel hub cap
HN40S	Hex nut, 1/2 - 13 light jam, SS	22003U-6	Upper wheel, 22", 6 spoke
S18252	Upper shaft lock nut	234	Grease fitting
S18253	Upper wheel aligning screw, SS	237	Upper shaft castellated lock nut
S229	Wheel cleaner arm spring, SS	238	Upper shaft castellated lock washer
S244	Wheel cleaner arm stud, SS	247A	Upper shaft bearing back-up washer
S295	Wheel cleaner arm, SS	512	Upper wheel hub cap gasket
		531	Retaining ring
		55174	Upper wheel hinge plate
		55194	Upper wheel assembly w/ hinge plate
		55196	Upper wheel assembly w/o hinge plate
		55197	Upper wheel hinge plate assembly



Item No.	Description	Item No.	Description
A18227	Bearing cup/cone assembly	18251AL	Upper V-belt pulley, 12.8 x 1 1/8, Al.
A18360	Lower bearing housing assembly less wheel	18300	Lower shaft woodruff key
CB94S	Carriage bolt, 3/8 - 16 x 1 1/2, SS	18360	Lower bearing housing
HN25S	Hex nut, 3/8 - 16, SS	18361	Lower shaft
LW20S	Lock washer, 3/8, SS	22003-6	Lower wheel, 22" 6 spoke
SSS05S	Set screw, 10 - 24 x 3/8, SS	277	Lower shaft pulley key
SSS20	Set screw, 3/8 - 16 x 3/8, knurled, cup point	360A1	Grease fitting
S252X	Shaft lock nut, SS	360B-2	Set screw, 1/2 - 13 x 3/4, flat point
18231DL	Lower shaft seal, double lip	362	Lower bearing housing cap

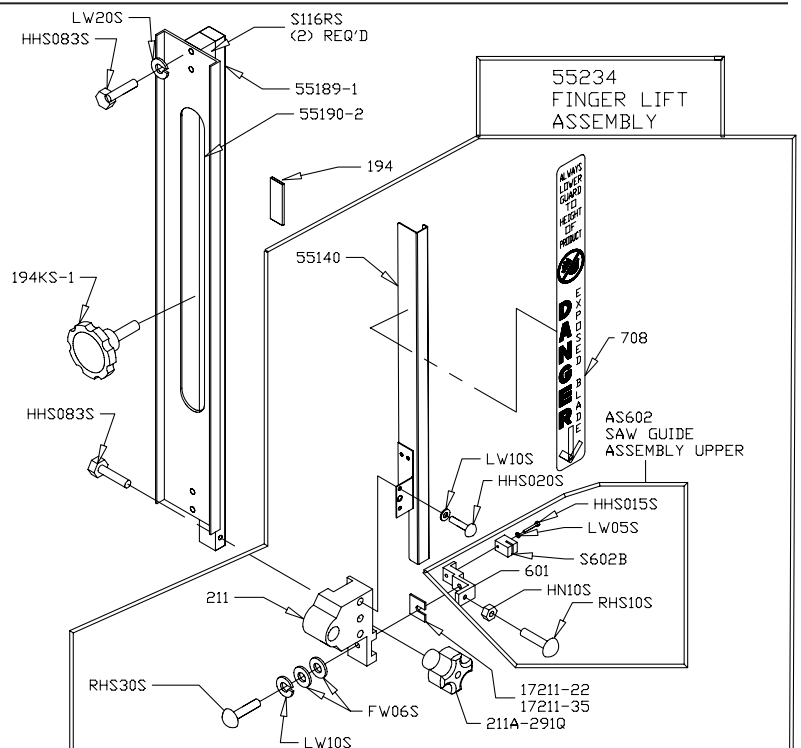


Item No.	Description
A18275	Meat gauge plate assembly
A262	Meat gauge release assembly
FW10S	Flat washer, ⁵ / ₁₆ , SS
HHS040S	Hex head screw, ¹ / ₄ - 20 x ³ / ₄ , SS
HHS060S	Hex head screw, ⁵ / ₁₆ - 18 x 1, SS
HN20S	Hex nut, ⁵ / ₁₆ - 18, SS
LW10S	Lock washer, ¹ / ₄ , SS
LW15S	Lock washer, ⁵ / ₁₆ , SS
S235	Taper pin, #4 x ³ / ₄ , SS
S262	Meat gauge release handle, SS
S265	Meat gauge release spring, SS
S264-1	Meat gauge release hand wheel, SS
S270	Meat gauge release pin
S275THS	Truss head screw, ¹ / ₄ - 20 x ³ / ₈ , SS
S275THS-1	Truss head screw, ¹ / ₄ - 20 x 1, SS

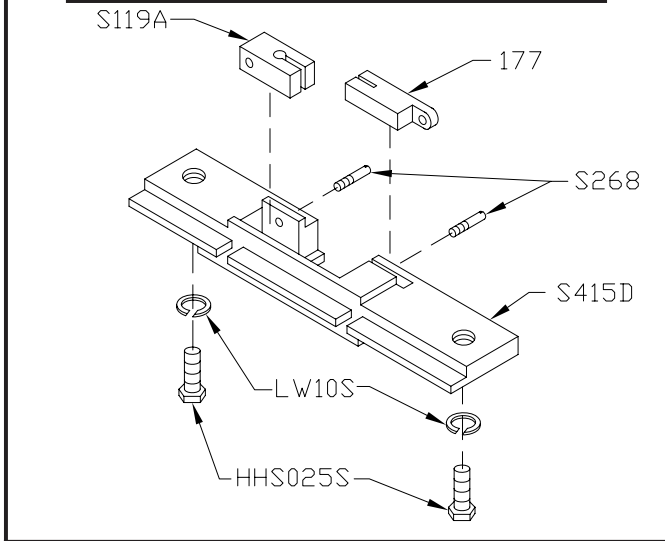
Item No.	Description
18275	Meat gauge arm
18275-2	Meat gauge plate less arm, SS
264G	Meat gauge hand wheel groove pin
267	Meat gauge release cotter pin
271AL	Meat gauge worm gear, aluminum
272-7-1	Knob, 3 point, ⁵ / ₁₆ - 18
272-8	Cap nut, ⁵ / ₁₆ - 18, SS
272-9	Hex bolt, ⁵ / ₁₆ - 18 x 2, SS
272-12	Brass ball, ⁷ / ₃₂ dia.
272-13	Hex bolt, ⁵ / ₁₆ - 18 x 1 ¹ / ₄ , w/ hole, SS
272-14	Castle nut, ⁵ / ₁₆ - 18, SS
55182	Meat gauge bracket
55185	Meat gauge gear rack
55236	Meat gauge assembly
55237	Meat gauge bracket assembly

55235-2 DOUBLE SAW GUIDE BAR ASSEMBLY

Item No.	Description
AS602	Saw guide assembly, SS Upper
FW06S	Flat washer, ¹ / ₄ , SS
HHS015S	Hex head screw, 10 - 32 x ⁷ / ₈ , SS
HHS020S	Hex head screw, ¹ / ₄ - 20 x ³ / ₈ , SS
HHS083S	Hex head screw, ³ / ₈ - 16 x 1 ³ / ₄ , SS
HN10S	Hex nut, 10 - 32, SS
LW05S	Lock washer, #10, SS
LW20S	Lock washer, ³ / ₈ , SS
RHS10S	Round head screw, 10 - 32 x ³ / ₄ SS
RHS30S	Round head screw, ¹ / ₄ - 20 x ⁷ / ₈ SS
S116RS	Spacer, double saw guide bar, SS
S602B	Upper saw guide, SS
194	Saw guide bar lock pad, Brass
194KS-1	Saw guide bar lock knob assembly
211	Finger lift
211A-291Q	Finger lift fastener knob
55140	Saw guard w/ 708 decal
55189-1	Saw guide bar, inner, 32", SS
55190-2	Reinforcement saw guide bar
55234	Finger lift assembly, removable
55235-2	Double saw guide bar assembly
601	Upper saw guide bracket
708	Decal, "Danger Exposed Blade"



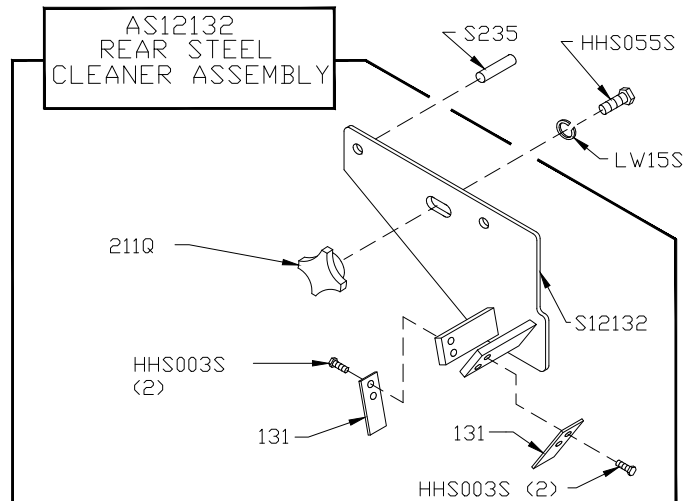
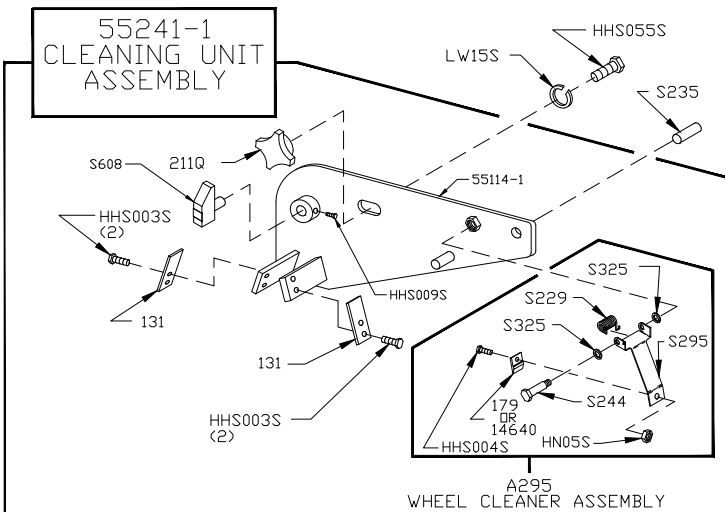
**AS415D
STATIONARY BAR
ASSEMBLY, SS**



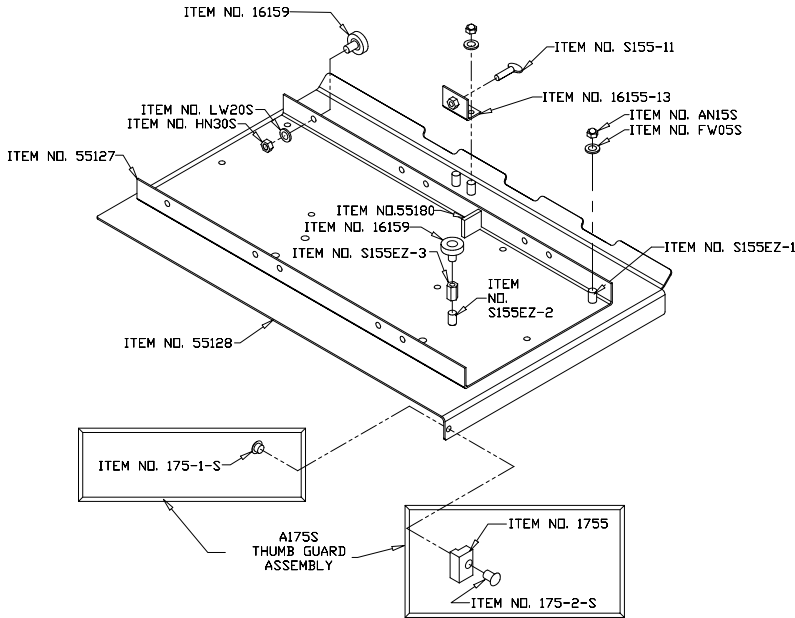
Item No.	Description
AS415D	Stationary bar assembly, SS
HHS025S	Hex head screw, 1/4-20 x 1/2 SS
LW10S	Lock washer, 1/4 SS
S119A	Saw guide in stationary bar, SS
S268	Stationary bar headless screw
S415D	Stationary bar, SS
177	Nylon filler

Item No.	Description
A295	Wheel cleaner assembly
AS12132	Rear cleaning unit assembly
HHS003S	Hex head screw, 8 - 32 x 1/4, SS
HHS004S	Hex head screw, 8 - 32 x 3/8, SS
HHS009S	Hex head screw, 10 - 24 x 1/4, SS
HHS055S	Hex head screw, 5/16 - 18 x 3/4, SS
HN05S	Hex nut, 8 - 32, SS
LW15S	Lock washer, 5/16, SS
S12132	Rear blade cleaning unit
S229	Wheel cleaner arm spring, SS
S235	Taper pin, #4 x 3/4, SS

Item No.	Description
S244	Wheel cleaner arm shoulder bolt, SS
S295	Wheel cleaner arm, SS
S325	Wheel cleaner arm washer, SS
S608	Back-up guide, carbide
131	Saw cleaner, SS
14640	Wheel cleaner, Rulon
179	Wheel cleaner
211Q	Fastener knob, 5/16 - 18, 4 point
55114-1	Lower front cleaning unit, weldment
55241-1	Lower front cleaning unit assembly

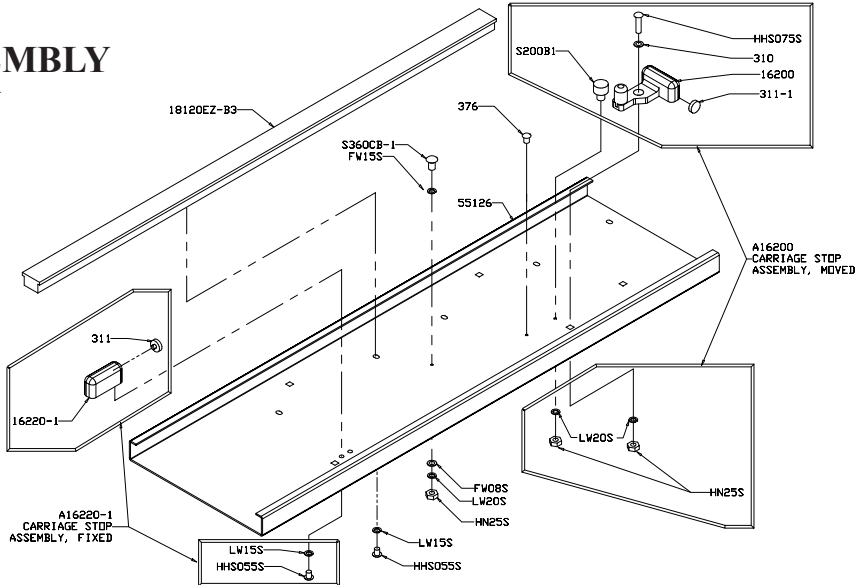


55216 MEAT CARRIAGE ASSEMBLY



Item No.	Description	Item No.	Description
A175S	Thumb guard assembly	16155-13	Carriage stop angle, SS
AN15S	Acorn nut, 1/4 - 20, SS	16159	Meat carriage bearing, SS
FW05S	Flat washer, 1/4, SS	175S	Thumb guard
HN30S	Hex nut, 3/8 - 16, SS	175-1-S	Thumb guard nut, SS
LW20S	Lock washer, 3/8, SS	175-2-S	Thumb screw, SS
S155EZ-1	Weld stud, 1/4 - 20 x 3/8, SS	55127	Meat carriage angle, EZ flow
S155EZ-2	Weld stud, 3/8 - 16 x 1/2, SS	55128	Meat carriage top only
S155EZ-3	Hex stand-off	55180	Carriage stop
S155-11	Meat carriage stop thumb screw, SS	55216	Meat carriage assembly

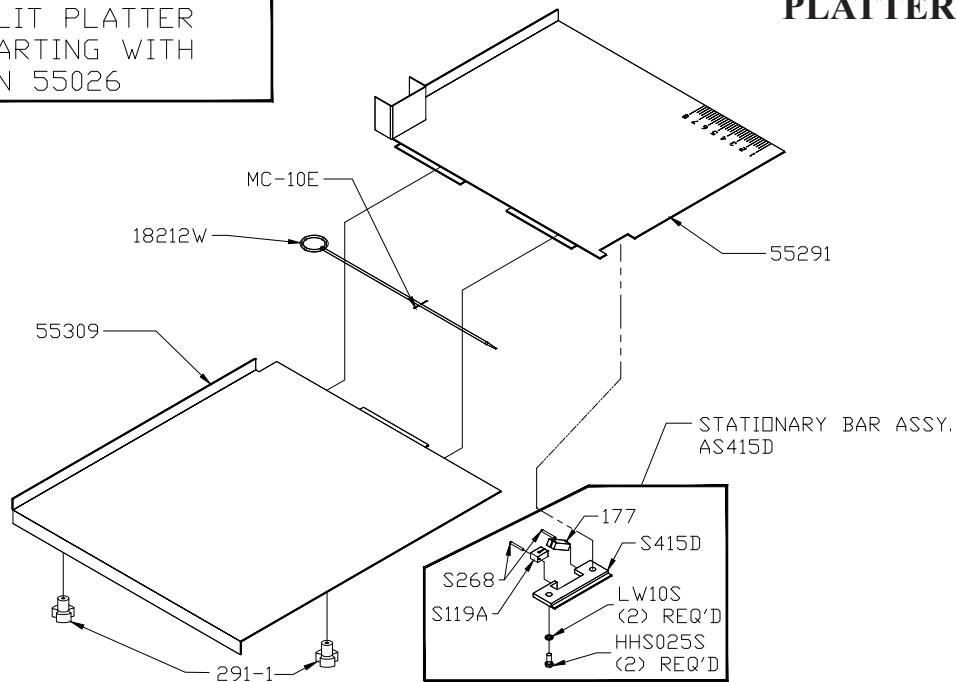
55186 CHANNEL ASSEMBLY EZ-FLOW



Item No.	Description	Item No.	Description
A16200	Channel stop assembly, movable	16200	Carriage stop, movable
A16220-1	Channel stop assembly, fixed	16220-1	Carriage stop, fixed
CB94S-1	Carriage bolt, flat head 3/8 - 16 x 1 1/4, SS	18120EZ-B3	Guide bar, EZ flow
FW08S	Flat washer, 3/8, SS	310	Waved washer
HHS055S	Hex head screw, 5/16 - 18 x 3/4, SS	311	Rubber bumper for fixed stops
HHS075S	Hex head screw, 3/8 - 16 x 1 1/4, SS	311-1	Rubber bumper for movable stop
HN25S	Hex nut, 3/8 - 16, SS	376	Drive screw, #10 x 1/2, SS
LW15S	Lock washer, 5/16, SS	55126	Channel, EZ flow
LW20S	Lock washer, 3/8, SS	55186	Channel assembly, EZ flow
S200B1	Carriage stop stud		

SPLIT PLATTER
STARTING WITH
S/N 55026

PLATTER ASSEMBLY

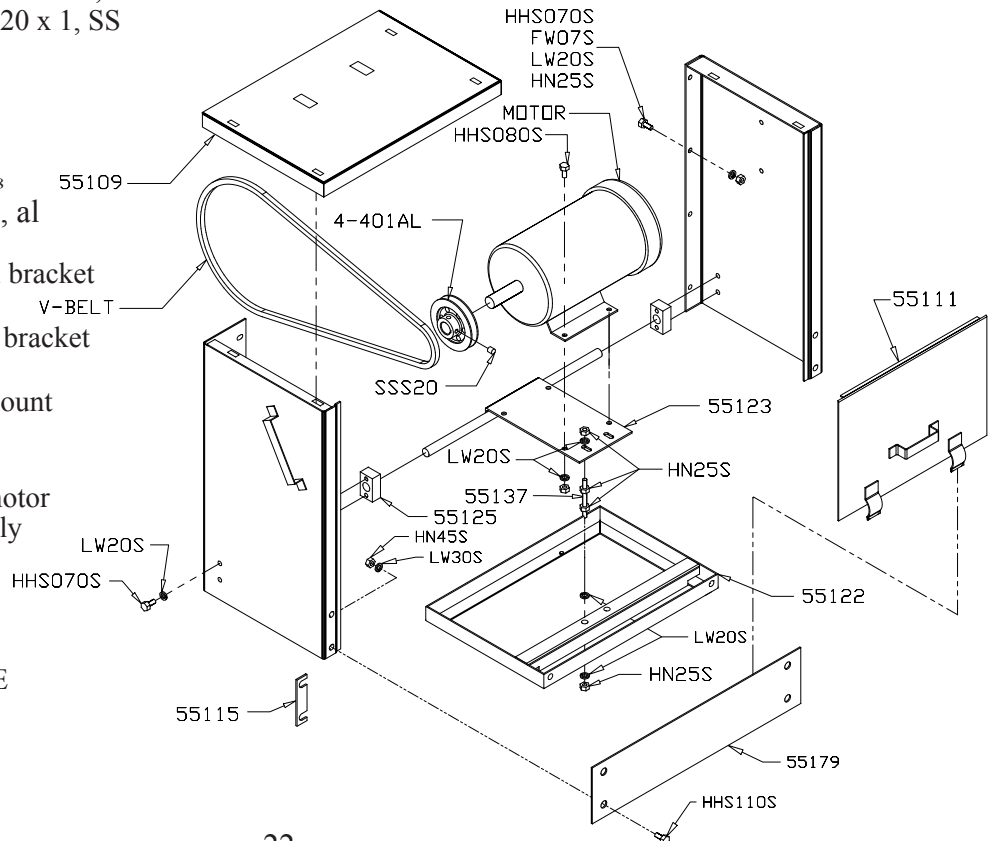


Item No.	Description
AS415D	Stationary bar assembly
HHS025S	Hex head screw, 1/4 - 20 x 1/2, SS
LW10S	Lock washer, 1/4, SS
MC-10E	Cotter pin, 1/8 x 1
S119A	Saw guide in stationary bar
S268	Stationary bar headless screw, SS

Item No.	Description
S415D	Stationary bar, SS
177	Nylon filler
291-1	Fastener knob
55291	Platter, right top
55309	Platter, left top
18212W	Platter rod

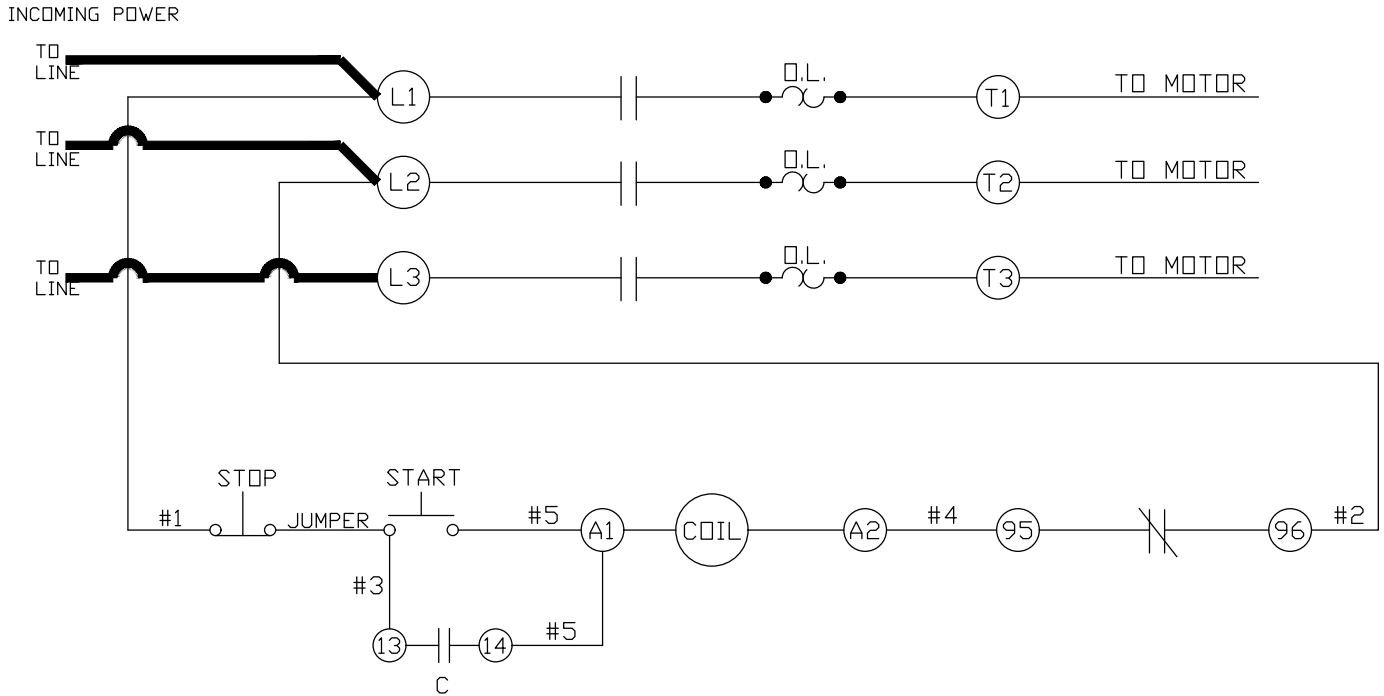
Item No.	Description
HHS070S	Hex head screw, 3/8 - 16 x 1, SS
HHS080S	Hex head screw, 3/8 - 16 x 1 1/2, SS
HHS110S	Hex head screw, 1/2 - 20 x 1, SS
HN25S	Hex nut, 3/8 - 16, SS
HN45S	Hex nut, 1/2 - 20, SS
LW20S	Lock washer, 3/8, SS
LW30S	Lock washer, 1/2, SS
SSS20	Set screw, 3/8 - 16 x 3/8
4-401AL	Motor pulley, 5 x 1 1/8, al
55109	Channel bracket, top
55111	Front panel - channel bracket
55115	Front spacer
55122	Bottom box, channel bracket
55123	Motor mount
55125	Pivot block, motor mount
55137	Adj. stud, motor mnt
55179	Support, front panel
55187	Channel bracket & motor compartment assembly

CHANNEL BRACKET & MOTOR COMPARTMENT

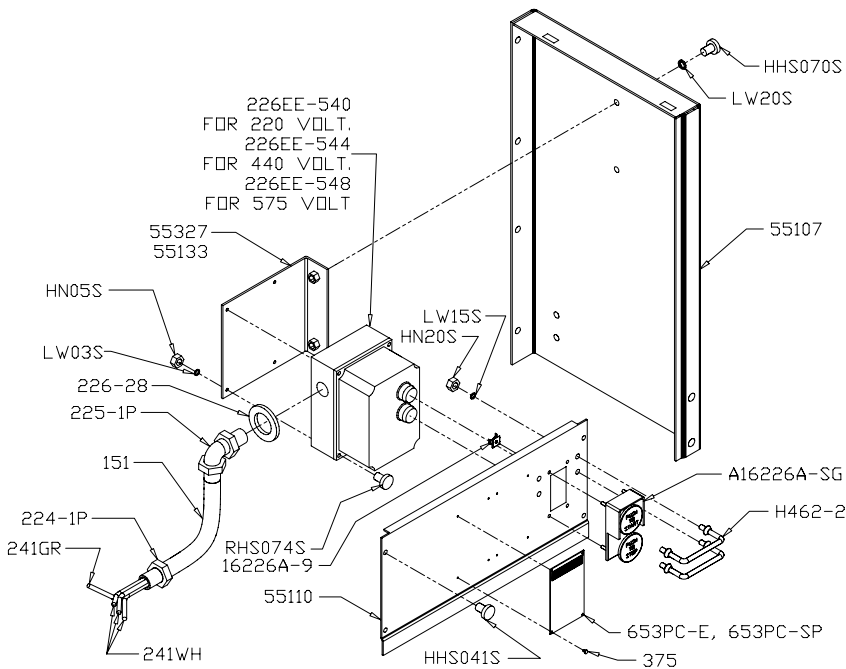


MOTORS	
55134-575	Baldor 5HP 575-60-3/TEFC
55134-WEG-HE	Weg 5HP 208-230/460-60-3/TE
V-Belts	
221-68	V-belt, 68"
221-70	V-belt, 70"

Model 55 Schematic Using 3PH AEG W.T. Switch for 208-220/440 Volts, Three Phase, 60 Cycle, Baldor Motor, 5HP

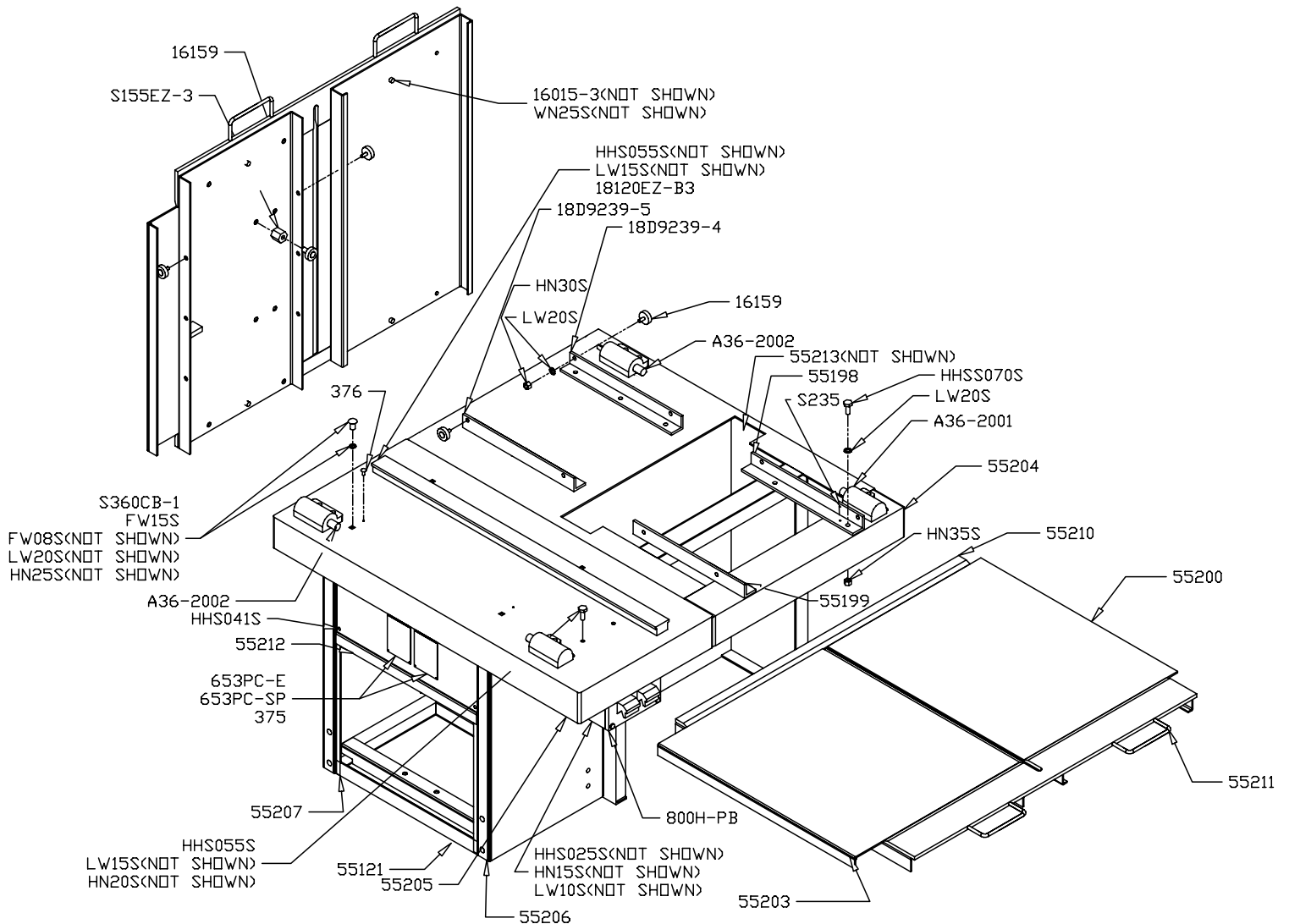


55188 SWITCH MOUNTING BRACKET ASSEMBLY



Item No.	Description
A16226A-SG	Gr/Rd sw button assembly
HHS041S	Hex head screw, 1/4 - 28 x 1/2, SS
HHS070S	Hex head screw, 3/8 - 16 x 1, SS
HN05S	Hex nut, 8 - 32, SS
HN20S	Hex nut, 5/16 - 18, SS
H462-2	Switch guard, SS
LW03S	Lock washer, #8, SS
LW15S	Lock washer, 5/16, SS
LW20S	Lock washer, 3/8, SS
RHS074S	Round head screw, 8 - 32 x 5/8, SS
151	Watertight conduit - 1 1/2"
16226A-9	Thread cutting nut
224-1P	Conduit connector, straight, WT
225-1P	Conduit connector, 90°, WT
226-28	Connector washer
226EE-540	Switch assembly, 5HP, 208-220-60-3
226EE-544	Switch assembly, 5HP, 440-60-3
226EE-548	Switch assembly, 5HP, 575-60-3
241GR	Wire, green, 12 ga.
241WH	Wire, white, 12 ga.
375	Drive screw
653PC-E	Warning label, English
653PC-SP	Warning label, Spanish
55107	Channel bracket, Rt side, *NSS
55110	Control panel, channel bracket
55133	Switch bracket. before s/n 55059
55327	Switch bracket after s/n 55059
NOT SHOWN	
226EE-CO11K	Contactors, LS11K.11S-CO, 208/220V
226EE-EO	Contactors, LS05.10-EO, 440V
226EE-FO	Contactors, LS05.10-FO, 575V
226EE-OL08L	Overload, B05-L, (5.5-8A)
226EE-OL18O	Overload, B18K-O, (14.5-18A)
55271	CE control panel

OPTIONAL DOUBLE ROLLING TABLES



Item No.	Description
A36-2001	Carriage stop assembly, movable
A36-2002	Carriage stop assembly, fixed
FW08S	Flat washer, 3/8, SS
FW15S	Flat washer, 1/2, SS
HHS025S	Hex head screw, 1/4 - 20 x 1/2, SS
HHS041S	Hex head screw, 1/4 - 28 x 1/2, SS
HHS055S	Hex head screw, 5/16 - 18 x 3/4, SS
HHS070S	Hex head screw, 3/8 - 16 x 1, SS
HN15S	Hex nut, 1/4 - 20, SS
HN20S	Hex nut, 5/16 - 18, SS
HN25S	Hex nut, 3/8 - 16, SS
HN30S	Hex nut, 3/8 - 16, light jam, SS
HN35S	Hex nut, 3/8 - 16, heavy jam, SS
LW10S	Lock washer, 1/4, SS
LW15S	Lock washer, 5/16, SS
LW20S	Lock washer, 3/8, SS
S155EZ-3	Standoff, EZ flow
S235	Taper pin, #4 x 3/4, SS
S360CB-1	Carriage bolt, 3/8 - 16 x 1 1/4
WN25S	Wing nut, 7/16, - 14, SS
16159	Meat carriage bearing
18120EZ-B3	Guide bar, EZ flow
18D9239-4	Left rear bearing angle
18D9239-5	Left front bearing angle

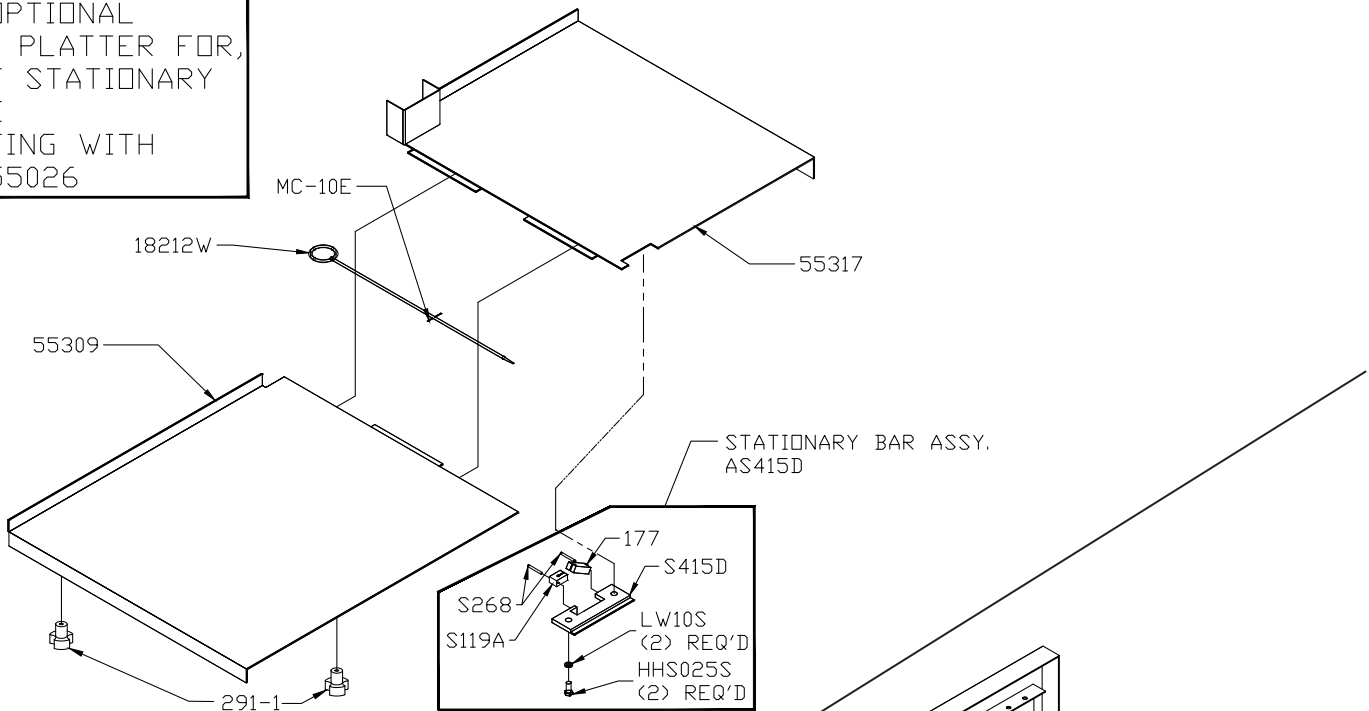
Item No.	Description
375	Drive screw
376	Drive screw, #10 x 1/2
55121	Bottom support weldment
55198	Bearing angle, right rear
55199	Bearing angle, right front
55200	Rear meat carriage, dbl rolling tables
55203	Front meat carriage, dbl rolling tables
55204	Rim extension, right
55205	Front box channel, dbl rolling tables
55206	Channel bracket, rt side, dbl rolling tables
55207	Channel bracket, lt side, dbl rolling tables
55210	Tie bar, left
55211	Tie bar, right
55212	Top front panel, channel bracket
55213	Filler plate, dbl rolling tables
653PC-E	Warning label, English
653PC-SP	Warning label, Spanish
800H-PB	WT pushbutton station, SS

NOT SHOWN

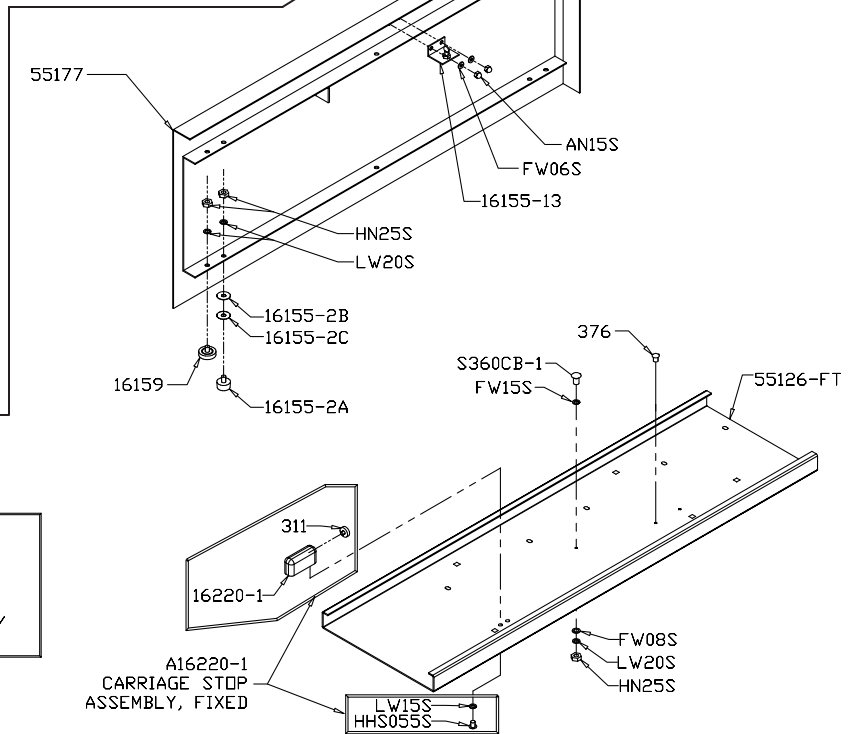
226EE-605	Switch assembly, 5HP, 208-230-60-3
226EE-CO11K	Contact, LS11K.11S-CO, 208/220V
226EE-OL180	Overload, B18K-O, (14.5-18A)
55304	Saw guard assembly, dbl rolling tables

OPTIONAL FIXED FRONT FULL LENGTH TABLE

OPTIONAL
SPLIT PLATTER FOR,
FRONT STATIONARY
TABLE
STARTING WITH
S/N 55026



Item No.	Description
AS415D	Stationary bar assembly
HHS025S	Hex head screw, 1/4 - 20 x 1/2, SS
LW10S	Lock washer, 1/4, SS
MC-10E	Cotter pin, 1/8 x 1
S119A	Saw guide in stationary bar
S268	Stationary bar headless screw, SS
S415D	Stationary bar, SS
177	Nylon filler
291-1	Fastener knob
55309	Platter, left top
55317	Platter, right top fixed table
18212W	Platter rod



OPTIONAL 55177
FRONT
STATIONARY
TABLE ASSEMBLY

Item No.	Description
A16220-1	Carriage stop assembly, fixed
AN15S	Acorn nut, 1/4 - 20, SS
FW06S	Flat washer, 1/4, SS
FW08S	Flat washer, 3/8, SS
FW15S	Flat washer, 1/2, SS
HHS055S	Hex head screw, 5/16 - 18 x 3/4, SS
HN25S	Hex nut, 3/8 - 16, SS
LW15S	Lock washer, 5/16, SS
LW20S	Lock washer, 3/8, SS
S360CB-1	Carriage bolt, 3/8 - 16 x 1 1/4, SS

Item No.	Description
16155-13	Carriage stop angle
16155-2A	Meat carriage guide
16155-2B	Meat carriage guide spacer, 1/64
16155-2C	Meat carriage guide spacer, 1/32
16159	Meat carriage bearing
16220-1	Carriage stop, fixed
311	Rubber bumper
376	Drive screw, #10 x 1/2, SS
55126-FT	Channel, for fixed front table
55177	Front stationary table assembly less channel

MODEL 55 ITEM NUMBERS AND DESCRIPTIONS

ALWAYS ADVISE MODEL & SERIAL NUMBER WHEN ORDERING

Item No.	Description	Item No.	Description
AN15S	Acorn nut, 1/4 - 20, SS	S268	Stationary bar headless screw, SS
CB64S	Carriage bolt, 1/4 - 20 x 1/2, SS	S270	Meat gauge release pin, SS
CB94S-1	Carriage bolt, flt hd. 3/8 - 16 x 1 1/2, SS	S275THS	Truss head screw, 1/4 - 20 x 3/8, SS
FW05S	Flat washer, 1/4, SS	S275THS-1	Truss head screw, 1/4 - 20 x 1, SS
FW08S	Flat washer, 3/8, SS	S295	Wheel cleaner arm, SS
FW10S	Flat washer, 5/16, SS	S325	Wheel cleaner arm washer, SS
FW15S	Flat washer, 1/2, SS	S415D	Stationary bar, SS
HHS003S	Hex head screw, 8 - 32 x 1/4, SS	S608	Back up guide, w/ carbide
HHS005S	Hex head screw, 8 - 32 x 5/8, SS	TP4S	Taper pin, #4 x 1 1/2, SS
HHS009S	Hex head screw, 10 - 24 x 1/4, SS	TP6S	Taper pin, #6 x 3/4, SS
HHS010S	Hex head screw, 10 - 32 x 3/8, SS	VT460S	Model & S/N plate, (S/N req'd)
HHS015S	Hex head screw, 10 - 32 x 7/8, SS	112-212	Waved washer
HHS020S	Hex head screw, 1/4 - 20 x 3/8, SS	131	Saw cleaner, SS
HHS025S	Hex head screw, 1/4 - 20 x 1/2, SS	14640	Wheel cleaner, rulon
HHS040S	Hex head screw, 1/4 - 20 x 3/4, SS	151	Conduit, watertight
HHS041S	Hex head screw, 1/4 - 28 x 1/2, SS	16015-3	Motor base plate wing nut
HHS0481S	Hex head screw, 1/4 - 20 x 1 1/2, SS	16155-13	Carriage stop angle, SS
HHS055S	Hex head screw, 5/16 - 18 x 3/4, SS	16159	Meat carriage bearing
HHS058S	Hex head screw, 5/16 - 18 x 7/8, SS	16200	Carriage stop, movable
HHS060S	Hex head screw, 5/16 - 18 x 1, SS	16220-1	Carriage sop, fixed
HHS070S	Hex head screw, 3/8 - 16 x 1, SS	16226A-9	Thread cutting nut, palm switch
HHS075S	Hex head screw, 3/8 - 16 x 1 1/4, SS	17211-22	Finger lift shim, .022
HHS085S	Hex head screw, 3/8 - 16 x 2, SS	17211-35	Finger lift shim, .035
HHS110S	Hex head screw, 1/2 - 20 x 1, SS	175S	Thumb guard, nylon
HHS125S	Hex head screw, 1/2 - 13 x 1, SS	175-1-S	Thumb guard nut, SS
HN05S	Hex nut, 8 - 32, SS	175-2-S	Thumb screw, 1/4 - 20 x 1/2, SS
HN10S	Hex nut, 10 - 32, SS	177	Nylon filler
HN15S	Hex nut, 1/4 - 20, SS	179	Wheel cleaner
HN20S	Hex nut, 5/16 - 18, SS	18D239-4	Left rear bearing angle
HN25S	Hex nut, 3/8 - 16, SS	18D239-5	Left front bearing angle
HN30S	Hex nut, 3/8 - 16, light jam, SS	18120EZ-B3	Guide bar, EZ-flow
HN35S	Hex nut, 3/8 - 16, machine screw, SS	18212W	Platter rod
HN40S	Hex nut, 1/2 - 13, light jam, SS	18230DL	Upper shaft seal, double lip
HN43S	Hex nut, 1/2 - 13, SS	18231DL	Lower shaft seal, double lip
HN45S	Hex nut, 1/2 - 20, SS	18247	Upper shaft
HN49	Hex nut, 5/8 - 11, zinc plated	18251AL	Pulley, upper V-belt, 12.8 x 1 1/2, Al.
HN55S	Hex nut, 5/8 - 18, jam, SS	18275	Meat gauge arm
H462-2	Switch guard, SS	18275-2	Meat gauge plate only, SS
LW05S	Lock washer, #10, SS	18300	Lower shaft woodruff key
LW10S	Lock washer, 1/4, SS	18360	Lower bearing housing
LW15S	Lock washer, 5/16, SS	18361	Lower shaft
LW20S	Lock washer, 3/8, SS	194	Saw guide bar lock pad, brass
LW30S	Lock washer, 1/2, SS	194KS-1	Lock knob lock knob assembly
LW35S	Lock washer, 5/8, SS	196	Tension spring
MC-10E	Cotter pin, 1/8 x 1, SS	211	Finger lift
RHS074S	Round head screw, 8 - 32 x 3/4, SS	211A-291Q	Fastener knob, 3/8 - 16, 4 point
RHS10S	Round head screw, 10 - 32 x 3/4, SS	211Q	Fastener knob, 5/16 - 18, 4 point
RHS30S	Round head screw, 1/4 - 20 x 7/8, SS	22003-6	Lower wheel, 22", 6 spoke
SSS04S	Set screw, 10-24 x 1/4, cup pt, SS	22003U-6	Upper wheel, 22", 6 spoke
SSS05S	Set screw, 10-24 x 3/8, cup pt, SS	221-68	V-belt, 68"
SSS20	Set screw, 3/8 - 16 x 3/8, cup pt, SS	221-70	V-belt, 70"
S116RS	Saw guide bar spacer block, SS	224-1P	Conduit connector, straight, WT
S119A	Saw guide bar in stationary bar, SS	225-1P	Conduit connector, 90 °, WT
S12132	Rear blade cleaning unit	226-28	Connector washer
S155EZ-3	Stand-off, EZ-flow	226EE-CO11K	Contactator, LS11K, 11S-CO, 208/220V
S18252	Upper shaft lock nut, SS	226EE-EO	Contactator, LS05.10-EO, 440V
S18253	Upper wheel aligning screw, SS	226EE-OL08L	Overload, B05-L, (5.5-8A)
S200B1	Stop stud, SS	226EE-OL18O	Overload, B18K-O, (14.5-18A)
S229	Wheel cleaner arm spring, SS	226EE-540	Switch assembly, 5HP, 208/220-60-3
S235	Taper pin, #4 x 3/4, SS	226EE-544	Switch assembly, 5HP, 440-60-3
S244	Wheel cleaner arm stud, SS	226EE-548	Switch assembly, 5HP, 575-60-3
S249	Base door lock handle	226EE-605	Switch assembly, 5HP, 208/220-60-3 for double rolling tables
S252X	Shaft lock nut, SS	234	Grease fitting
S262	Meat gauge release handle, SS	237	Upper shaft castellated lock nut
S264-1	Meat gauge release hand wheel, SS	238	Upper shaft castellated lock washer
S265	Meat gauge release spring, SS		

MODEL 55 ITEM NUMBERS AND DESCRIPTIONS

Item No.	Description	Item No.	Description
241GR	Wire, green, 12 gauge	55140	Safety saw guard w/ 708 decal
241WH	Wire, white, 12 gauge	55154	Head door
247A	Upper shaft bearing spacer washer	55165	Platter rod, RH platter top
256P	Safety end cut pusher plate	55170	Blade tension cap gauge
264G	Meat gauge hand wheel groove pin	55171	Blade tension adjustment housing
267	Meat gauge release cotter pin	55172	Blade tension screw
271AL	Meat gauge worm gear, Aluminum	55173	Blade tension adjustment handle
272-7-1	Lock knob, 5/16 - 18, 3 point	55174	Upper wheel hinge plate
272-8	Cap nut, 5/16 - 18, SS	55177	Front stationary table assembly
272-9	Hex bolt, 5/16 - 18 x 2, SS	55179	Support, channel bracket front panel
272-12	Brass ball	55181	Base foot outrigger, front
272-13	Hex bolt, 5/16 - 18 x 1 1/4, SS	55182	Meat gauge bracket
272-14	Castle nut, 5/16 - 18, SS	55184	O-ring, blade tension screw
310	Waved washer	55185	Meat gauge gear rack
311	Rubber bumper for fixed stop	55189-1	Saw guide bar, 32"
311-1	Rubber bumper for movable stop	55190-2	Reinforcement bar, 30"
360A1	Lower bearing housing grease fitting	55195	Right top fixed table, platter
360B-2	Lower bearing housing tilt set screw	55198	Bearing angle, right rear
362	Lower bearing housing cap	55199	Bearing angle, right front
36-239LN	Lock nut, 1/4 - 12, SS	55200	Rear meat carriage, dbl rolling tables
36-239L-10A	Solid leg, 10", SS	55203	Front meat carriage, dbl rolling tables
36-242R	Base door lock, right	55204	Rim extension, right
375	Drive screw	55205	Front box channel, dbl rolling tables
376	Drive screw, #10 x 1/2, SS	55206	Channel brkt, rt side, dbl rolling tables
4-401AL	Pulley, motor, 5 x 1 1/8, aluminum	55207	Channel brkt, lt side, dbl rolling tables
512	Upper wheel hub gasket	55210	Tie bar, left
531	Retaining ring	55211	Tie bar, right
55102	Base foot outrigger angle, rear, 30"	55212	Top front panel, channel bracket
55104	Base door, right, hinged	55213	Filler plate, dbl rolling tables
55105	Left panel with handle	55290	Platter bracket
55106	Scrap bucket	55291	Platter - right top
55109	Channel bracket, top	55302HT	Saw blade, 164 1/2 x 3/4 x .022 HT, 3TPI
55110	Control panel, channel bracket	55309	Platter assembly - left top
55111	Front panel, channel bracket	55312	O-ring for tension cap gauge
55114-1	Lower cleaning unit weldment	55313	Plastic washer, tension spring
55123	Motor mount weldment	55314	O-ring, plastic washer
55125	Pivot block, motor mount	55317	Platter, right top fixed table
55126	Channel, EZ-flow	55327	Switch bracket, starting w/ 55059
55126-FT	Channel, fixed front table	601	Upper saw guide bracket
55127	Meat carriage angle, EZ-flow	602B	Upper blade back-up guide, carbide
55131	Platter, right top	653PC-E	Warning label, English
55133	Switch bracket	653PC-F	Warning label, French
55134-WEG-HE	Motor, Weg 5HP, 208-220/460-60-3, TE	653PC-SP	Warning label, Spanish
55134-575	Motor, Baldor, 5HP, 575-60-3, TE	671	Wall poster
55137	Adjustment stud, motor mount	708	Decal "Danger Exposed Blade"
55138	Hinge bracket, upper wheel	800H-PB	Pushbutton station, watertight, SS

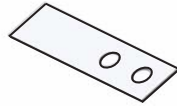
ASSEMBLIES FOR MODEL 55

Item No.	Description	Item No.	Description
AS12132	Rear cleaning unit assembly	55164	Left top platter assembly
AS415D	Stationary bar assembly, SS	55177	Front stationary table assembly
A16112	Head door latch assembly	55186	Channel assembly, EZ-flow
A16200	Carriage stop assembly, movable	55191	Head & door assembly, SS
A16220-1	Carriage stop assembly, fixed	55192	Blade tension assembly
A16226A-SG	Green/Red palm button assembly	55193	Hinge bracket assembly, upper wheel
A175S	Thumb guard assembly	55194	Upper wheel assembly w/ hinge plate
A18227	Bearing cup/cone assembly	55196	Upper wheel assembly w/o hinge plate
A18247	Upper shaft/bearing assembly less wheel	55197	Upper hinge plate assembly
A18275	Meat gauge plate assembly	55216	Meat carriage assembly
A18360	Lower brng housing assembly less wheel	55233	Head door assembly, SS
A262	Meat gauge release assembly	55234	Finger lift assembly, removable
A295	Wheel cleaner assembly	55235-2	Saw guide bar assembly, double
A36-2001	Carriage stop asbly, movable, dbl roll	55236	Meat gauge assembly
A36-2002	Carriage stop asbly, fixed, dbl roll	55237	Meat gauge bracket assembly
A602	Saw guide assembly, upper	55238	Platter assembly, before s/n 55026
		55241-1	Front cleaning unit assembly

WEARABLE SAW PARTS THAT WILL FIT BIRO MODEL 55



Item No. S130
SAW CLEANER BRACKET



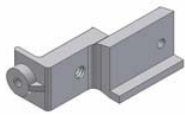
*Item No. 131
STEEL BLADE CLEANER



*Item No. S119A
LOWER SAW GUIDE



*Item No. 177
NYLON FILLER



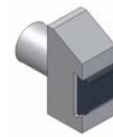
Item No. 601
UPPER SAW GUIDE BRACKET



*Item No. S602B
UPPER SAW GUIDE
W/ BEVELED CARBIDE



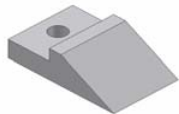
*Item No. S265
MEAT GAUGE SPRING



*Item No. S608
LOWER BLADE BACKUP
W/ CARBIDE



*Item No. S268
FILLER & GUIDE STUD



*Item No. 179
WHEEL CLEANER



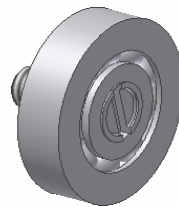
*Item No. S244
WHEEL CLEANER ARM STUD



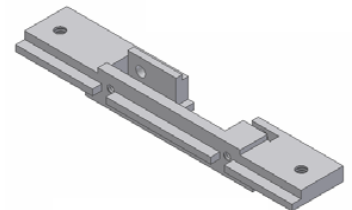
*Item No. S229
WHEEL CLEANER
ARM SPRING



Item No. S295
WHEEL CLEANER ARM



Item No. 16159
CARRIAGE BEARING



Item No. S415D
STAINLESS STATIONARY BAR



NOT TO SCALE



USE PARTS REPAIR KIT PART NO. 55700

* included in repair kit.

OPERATOR'S SIGNATURE PAGE

WARNING

READ AND UNDERSTAND THIS ENTIRE
MANUAL BEFORE SIGNING BELOW

MY SIGNATURE ATTESTS THAT I HAVE COMPLETELY READ AND UNDERSTAND THIS MANUAL. I REALIZE THAT THIS MACHINE, IF OPERATED CARELESSLY, CAN CAUSE SERIOUS INJURY TO MYSELF AND OTHERS.

NAME (PRINT)	SIGNATURE	SUPERVISOR'S INITIALS	DATE

LIMITED WARRANTY:

WARRANTY: The BIRO Manufacturing Company warrants that Model 55 Power Meat Saw will be free from defects in material and workmanship under normal use and with recommended service. BIRO will replace defective parts, which are covered by this limited warranty, provided that the defective parts are authorized for return, shipping charges prepaid, to a designated factory for inspection and/or testing.

DURATION OF WARRANTY: The warranty period for all parts covered by this limited warranty is one (1) year from date of Inspection/Demonstration advised on the returned Warranty Registration Card, or eighteen (18) months from original factory ship date, whichever occurs first, except as noted below.

PARTS NOT COVERED BY WARRANTY: The following are **not** covered by this limited warranty: wearable parts on the cleaning system such as saw blade cleaners (Item No. 131), wheel cleaners (Item No. 179), blade backup guides (Item No's. S602B, and S119A), and the nylon filler (Item No. 177). This limited warranty does not apply to machines sold as used, rebuilt, modified, or altered from the original construction in which the machine was shipped from the factory. (WATER CONTAMINATED ELECTRICAL SYSTEMS ARE NOT COVERED UNDER THIS LIMITED WARRANTY.) BIRO is not responsible for electrical connection of equipment, adjustments to switch controls or any other electrical requirements, which must be performed only by a certified electrician. BIRO is not responsible for service charges or labor required to replace any part covered by this limited warranty or for any damages resulting from misuse, abuse, lack of proper or recommended service.

EXCLUSION OF WARRANTIES AND LIMITATION OF REMEDIES: BIRO gives no warranties other than those expressly stated in this limited warranty. THE IMPLIED WARRANTY OF MERCHANTABILITY, THE IMPLIED WARRANTY OF FITNESS FOR PROCESSING FOOD PRODUCTS, AND ALL OTHER IMPLIED WARRANTIES ARE SPECIFICALLY EXCLUDED. BIRO IS NOT LIABLE FOR CONSEQUENTIAL OR INCIDENTAL DAMAGES, EXPENSES, OR LOSSES. THE REMEDIES PROVIDED IN THIS BIRO LIMITED WARRANTY ARE PURCHASER'S SOLE AND EXCLUSIVE REMEDIES AGAINST BIRO.

REGISTRATION CARDS: You must sign, date and complete the warranty registration card supplied with each machine. The warranty card must be returned to The BIRO Manufacturing Company for proper registration. If no warranty card is returned to BIRO, the warranty period will begin from the date the machine was originally shipped from the factory.

HOW TO GET SERVICE:

1. Contact the agency from whom you purchased the machine; or
2. Consult the yellow pages of the phone directory for the nearest authorized dealer; or
3. Contact Biro Manufacturing Company for the nearest authorized service entity in your area.

BIRO MANUFACTURING COMPANY

1114 West Main St.
Marblehead, OH 43440
Ph. 419-798-4451
Fax 419-798-9106
Service@birosaw.com
www.birosaw.com